

AGENDA

Meeting: BRADFORD ON AVON AREA BOARD
Place: St Laurence School, Bradford on Avon
Date: Wednesday 9 March 2016
Time: 7.00 pm

REFRESHMENTS AVAILABLE

Including the Parishes of Limpley Stoke, Winsley, Monkton Farleigh, Bradford-on-Avon, Holt, South Wraxall, Wingfield, Westwood, Staverton

The Area Board welcomes and invites contributions from members of the public. The chairman will try to ensure that everyone who wishes to speak will have the opportunity to do so.

If you have any requirements that would make your attendance at the meeting easier, please contact your Democratic Services Officer.

Refreshments and networking opportunities will be available from 6:30pm.

Please direct any enquiries on this Agenda to Kevin Fielding, on 01249 706612 or email kevin.fielding@wiltshire.gov.uk

or Peter Dunford (Bradford on Avon Community Engagement Manager), direct line 01225 713060 or (email) peter.dunford@wiltshire.gov.uk

All the papers connected with this meeting are available on the Council's website at www.wiltshire.gov.uk

Press enquiries to Communications on direct lines (01225) 713114 / 713115.

Wiltshire Councillors

Cllr Rosemary Brown - Bradford on Avon
North
Cllr Trevor Carbin – Holt & Staverton

Cllr Magnus Macdonald – (Chairman)
– Winsley & Westwood
Cllr Ian Thorn – Bradford on Avon
South

RECORDING AND BROADCASTING NOTIFICATION

Wiltshire Council may record this meeting for live and/or subsequent broadcast on the Council's website at <http://www.wiltshire.public-i.tv>. At the start of the meeting, the Chairman will confirm if all or part of the meeting is being recorded. The images and sound recordings may also be used for training purposes within the Council.

By entering the meeting room you are consenting to being recorded and to the use of those images and recordings for broadcasting and/or training purposes.

The meeting may also be recorded by the press or members of the public.

Any person or organisation choosing to film, record or broadcast any meeting of the Council, its Cabinet or committees is responsible for any claims or other liability resulting from them so doing and by choosing to film, record or broadcast proceedings they accept that they are required to indemnify the Council, its members and officers in relation to any such claims or liabilities.

Details of the Council's Guidance on the Recording and Webcasting of Meetings is available on the Council's website along with this agenda and available on request.

If you have any queries please contact Democratic Services using the contact details above.

	Items to be considered	Time
1	Chairman's Welcome and Introductions	7:00pm
2	Apologies for Absence	
3	Declarations of Interest	
	To receive any declarations of disclosable interests or dispensations granted by the Standards Committee.	
4	Chairman's Announcements (<i>Pages 1 - 2</i>) <ul style="list-style-type: none"> • Bus Service Review • Iron Duke Heritage Lottery Project • Local Highways Investment Fund 2016/17 • Clean for the Queen • Health and Wellbeing Sub-group • Public Health Briefing – Feb 16 	7:05pm
5	Minutes (<i>Pages 3 - 8</i>) <ul style="list-style-type: none"> • To approve and sign as a correct record the minutes of the Area Board meeting held on 13 January 2016. • To approve and sign as a correct record the minutes of the Local Youth Network Management Group meeting held on 8 February 2016. • To approve and sign as a correct record the minutes of the Community Area Transport Group meeting held on 29 February 2016. 	7:10pm
6	Partner Updates (<i>Pages 9 - 10</i>) <ul style="list-style-type: none"> • Wiltshire Police • Wiltshire Fire and Rescue Service • Wiltshire Clinical Commissioning Group • HealthWatch Wiltshire 	7:15pm

7	Youth Grants recommended for approval by LYN Management Group <i>(Pages 11 - 16)</i> <ul style="list-style-type: none"> • Bradford on Avon Scouts • Bradford on Avon Air Cadets • Bobcats Womens Rugby • Holt Skate Park • Holt Youth Club 	7:20pm
8	Summary of Community Youth Grants Awarded in 2015/16 Emma Coombs - Community Youth Officer and young people from the Local Youth Network to introduce short presentations from selected youth projects.	7:40pm
9	Report of Traffic and Accessibility Forum Ashley Seath - Bradford on Avon Seniors Forum and Eamon McClelland - Disability Friendly BoA. Report back on outcomes of forum held on 10 February, including the launch of a disabled access initiative.	8:00pm
10	The Bradford on Avon Walking Wheel Pam Hyde and Richard Craft. To improve rights of way and enjoyment of the countryside across the Bradford on Avon community area.	8:20pm
11	The Road to Rio Challenge Peter Dunford - Community Engagement Manager To encourage the community to sign up to an active lifestyle – running, cycling, swimming, walking – as part of a completion between Wiltshire’s community areas ahead of the Olympic Games this summer.	8:35pm
12	Summary of Community Grants awarded in 2015/6 and priorities for 2016/17 Peter Dunford - Community Engagement Manager To summarise grants given and to ring-fence future spending	8:45pm

around expressed priority areas.

- | | | |
|----|---|---------------|
| 13 | Urgent Applications to Community Grant Scheme 2016/17 <ul style="list-style-type: none">• Walkers are Welcome requesting £1,603 towards the Bradford on Avon Walking Wheel.• Councillor Magnus Macdonald requesting £5,000 towards the Avoncliff car park.• Councillor Magnus Macdonald requesting £3,000 towards essential community engagement activities around delivery of the Iron Duke Heritage Lottery project. | 8:55pm |
| 14 | Date of Next Meeting <ul style="list-style-type: none">• Wednesday 11 May at St Margaret's Hall, Bradford on Avon. | 9:10pm |
| 15 | Close | |

Agenda Item 4

Chairman's Announcements

Subject:	Wiltshire Passenger Transport Review
Officer Contact Details:	Passenger Transport Unit- 0300 456 0100/ passengertransport@wiltshire.gov.uk
Weblink:	http://consult.wiltshire.gov.uk/portal

Wiltshire Council is undertaking a review of Wiltshire Council supported bus services.

This is part of a wider review of all areas of Wiltshire Council's passenger transport remit.

Although passenger transport makes a strong contribution to the priorities that underpin Wiltshire Council's Business Plan, a key challenge in recent years has been how the service can continue to achieve these priorities in the face of growing pressures on local authority spending. This review is therefore being undertaken to help identify savings from passenger transport budgets.

Roughly half of bus routes in Wiltshire are operated with the need for financial support from Wiltshire Council. Services with fewer passengers, weekend and evening, or remote services require more support. Many other local authorities have already made savings from reducing or withdrawing subsidised bus routes.

The Council has already completed a pre consultation assessment, (details can be found via this link (www.wiltshire.gov.uk/localtransportplan3)).

We will now undertake a broader consultation to hear the views of residents. The Council has made no decisions and would like to see how far you agree or disagree with the presented options, or alternatively suggest your own. Consultation documents can be viewed from the 11 January 2016 on the Council's consultation portal <http://consult.wiltshire.gov.uk/portal>.

Hard copies of the consultation material including questionnaires will be available at local libraries and at main council offices from the 11 January 2016. Questionnaires will also be available on buses operating a journey that is funded by Wiltshire Council, and can be sent out on request.

The consultation will be open from 11 January 2016 to 5pm on the 4 April 2016.

If you have any queries, please contact us using the details:

By email to: passengertransport@wiltshire.gov.uk

Public Transport Survey
Passenger Transport Unit
Wiltshire Council
County Hall
Bythesea Road
Trowbridge
Wiltshire
BA14 8JN
Tel. No. 0300 456 0100

Proposed Highways Major Maintenance 2016/17

Bradford on Avon Area Board

Road	Location	Recommended Treatment	Estimated Length (m)
U/C	Chalfield Lane (junction with Leigh Road) to Chalfield Manor to Coombe Lane junction	Surface Dressing	2,952
C237/U/C	Blackberry Lane (junction Winsley Hill B3108) north into Conkwell north into Warleigh Lane	Surface Dressing	2,900
C237	Junction with B3108 Winsley Bypass north to junction with Blackberry Lane	Surface Dressing	1,822
U/C	Junction with B3108 north to junction with Warleigh Lane	Surface Dressing	909
U/C	Haugh Farm Road	Surface Dressing	1644
U/C	Junction with B3108 Winsley Bypass north to fork junction	Surface Dressing	295
U/C	Ashley Road (Junction with B3108 past Ashley Lane through to Upper Bearfield Farm junction)	Surface Dressing	3,007
C238	Little Ashley (junction B3108) north into Ashley Green (junction with Bath Road A363)	Surface Dressing	1960
U/C	Iford, Westwood	Resurfacing	400
A363	Masons Lane, Bradford-on-Avon	Skid Resistance Improvements	310

Community Area Well Being Group Terms of Reference

DRAFT

1. Purpose

Definition of a Well Being Group

The Well Being Group is a sub group of the Community Area Board. It represents a wide range of community stakeholders who work in partnership to facilitate well-being across the community area. People living in the community play a direct role in setting the agenda for this group.

Well Being Groups will identify local needs, priorities and outcomes and make recommendations to the Area Board on how funding for activities should be deployed.

2. Membership

The Well Being Groups may include representatives of:

- Members of the Community Area Board
- Older Peoples Champion
- Carers Champion
- Health Champion
- People from the community
- Town and Parish Councils
- Health and Social Care Commissioners
- Community and voluntary organisations and groups
- Community transport provider
- Police
- GP Practices
- Other organisations, agencies and individuals that have a genuine interest in promoting the welfare and interests of older people

All representatives must be subject to appropriate safeguarding requirements.

The participation and involvement of people

People living in the community must play a central role in all aspects of the Well Being Groups including the design, development, delivery and review of the local activities.

Well Being Groups are encouraged to use a variety of methods to ensure people participate and are involved in decision-making processes. Existing groups may provide a useful forum for involving people, although the decision to retain these groups is for local determination.

Well Being Groups must ensure that consultation with people is representative and takes into account the views and needs of under-represented groups (those with protected characteristics) to ensure compliance with the local authorities Public Sector Equality Duty.

Roles of all members of the Well Being Groups

All members will be required to:

- Take an active part in the development of the Well Being Groups and its aims.
- Ensure that their organisation is represented by a person of appropriate experience/competency (or his/her appointed deputy) who has full authority within the relevant organisation to speak on behalf of the organisation and contribute fully to all discussions.
- Take responsibility for sharing information with the Well Being Groups relevant to their organisation/ stakeholders/sector.
- Contribute any information that may have a bearing on activities for older people and ensure that this is shared with the Well Being Groups.
- Champion the voice and influence of people in decision making.
- Be open and honest and work collaboratively.
- Work to promote equality and non-discriminatory practices in all aspects of the Well Being Groups activities.
- Respect all members of the Well Being Groups and invited representatives.
- Work to improve outcomes for people and ensure high quality safeguarding practice.

3. Structure

The Well Being Groups should come together on a quarterly basis, operating in a way which encourages active engagement, dialogue, debate and improved partnership working between key stakeholders.

A smaller management group will take responsibility for coordinating and planning the Well Being Groups activities. The Chair of the group will be decided locally and could be any member of the wider Well Being Group. The group will include a member of the Community Area Board, who will work with the Chair to present recommendations and provide updates on progress at Area Board meetings.

The management group will generally comprise of:

- The chairperson
- Champions
- Community Engagement Manager
- Commissioning Manager for the area

The appointment of councillors (excluding officers) to Well Being Groups will normally be agreed at a full meeting of the Area Board. Membership may be varied, with the agreement of the Area Board Chairperson, subject to approval at the next full Area Board meeting.

Where required, the Area Board may appoint additional people to the management group if it is felt there involvement would be important for the function of the group.

Alternative people can represent people at the Well Being Group, however, it is preferred that the same representative attends if possible to ensure consistency of membership.

4. Responsibilities of the Well Being Groups

Key responsibilities for the Well Being Groups include:

- Facilitating and coordinating the process to design, develop, deliver and review activities for people in the local area;
- Developing a written overview of the needs, outcomes, priorities and objectives for activities in the local area (sometimes referred to as a Market Position Statement);
- Facilitating and monitoring the provision of a community transport service for the community area
- Making recommendations to the Community Area Board on how priorities for funding should be determined (to include evaluating opportunities for applying for grants);
- Monitoring and reporting on the quality and effectiveness local activities;

- Monitoring and reporting on the quality and effectiveness of information and advice in the community area
- Addressing any conflicts of interest that may arise as part of the local decision making process.

Recommendations to the Community Area Board will usually be reached by consensus but if necessary these can be agreed by a vote.

The management group may invite representatives from local organisations/agencies to its meetings etc to provide expertise or to share local knowledge on activities, projects and programmes in the area.

5. Funding

Area Boards will have an annual revenue budget allocated to them. The Well-Being group will advise the Area Board on how these funds should be allocated. Well-being groups will be able to bid, apply for funding from other sources and would also be expected to feedback to commissioners on priorities for the Countywide contracts.

6. Media Relations

Members of the Well Being Groups may not issue media statements on behalf of the Community Area Board. Any media statements about the work of the Well Being Groups should be agreed with between the Well Being Groups and Chairperson of the Community Area Board.

7. Review

These terms of reference are subject to change and should be reviewed by the Leader on an annual basis.



Public Health Briefing Note February 2016



Website: www.wiltshire.gov.uk/publichealthwilt Email: publichealth@wiltshire.gov.uk Tel: 0300 003 4566

How Wiltshire is leading the way - Emergency Preparedness, Resilience and Response (EPRR)

Knowing people in Wiltshire are protected in an emergency is important to us all and our EPRR team play a crucial role in making sure our communities are well protected. On 23 February the Council approved Wiltshire's Integrated Emergency Plan, which will allow us to more effectively protect people should a major incident take place. Through working with our partners in emergency services we are creating safer, more resilient communities.

This year the team have run multiagency community resilience workshops for 250 parish and town councils which have helped communities complete local plans. The workshops are a big step forward in helping the public cope during widespread emergencies like flooding, snow or disease outbreaks when the public services' resources will be stretched.



This month proved just how effective these local plans are when we received three flood warnings and flood alerts for rivers in Wiltshire and there were particularly high river levels in the centre of Bradford on Avon. The decision was taken, in connection with the Environment Agency and Fire and Rescue Service, to erect temporary flood barriers in the town. The barriers were collected and put up by Wiltshire Council and the Fire and Rescue Service in a successful multi-agency response but they were monitored by Bradford on Avon Community Response Volunteers (pictured here). The team are the most proactive community resilience response team we have in Wiltshire and have been trained by the emergency planning, public health, flood response and the highways team. They are a great example of how, with our support, local people are taking the lead.

The Wiltshire and Swindon Local Health Resilience Partnership is currently revising their pandemic flu plan, which will give guidance to the local health community as to what to do in the initial stages of a pandemic. If you would like further information please contact Jennifer.wright@wiltshire.gov.uk

Protecting local businesses

Business continuity is the process of keeping an organisation running during disruptions. This could be due to a power cut, industrial action, IT failure, or staff illness. An effective continuity plan will help protect your customers and patients health as well as your business. A new online tool is available from the Business Emergency Resilience Group, which is part of The Prince's Business Responsibility Trust. [Please download the plan](#) and complete it if your organisation has no current business continuity plan, or if you would like a different perspective.

You can also do more to protect your business from the threat of cyber crime. If you wish to join the Cyber-Security Information Sharing Partnership (CiSP) at <https://www.cert.gov.uk/cisp/> you can use The South West Regional Cyber Crime Unit as a sponsor. Access the 'South West Regional Node' and find real-time information about current threats.

Health and wellbeing in Wiltshire

This month Wiltshire's latest health profile was published by Public Health England. The profile confirms that injuries due to falls and hip fractures in people aged 65 have reduced and under 18 conceptions have also fallen. Please visit [Health Profiles: February 2016 data update](#) to find out more.

Community Area Joint Strategic Assessment

Over the last two years public health intelligence has worked with partners to help our communities develop locally led solutions to local issues. In 2015 we reported on how providing data on local health, environments, housing, community safety and transport has allowed local people access to the information they need to tackle local challenges. Have you been involved in local projects or been working with community groups? Please contact emily.kavanagh@wiltshire.gov.uk. A report on local projects will go to the Health and Wellbeing Board (HWB) later this year and we would like to reflect the great work all of our partners have been doing. [You can find out more here](#) and read about the impact of the [CA JSAs here](#). [Last year's report to HWB can be found here](#).

National CSE Awareness Day

Child sexual exploitation (CSE) is a type of [sexual abuse](#) in which children are sexually exploited for money, power or status. Children or young people may be tricked into believing they're in a loving, consensual relationship. They might be invited to parties and given drugs and alcohol. They may also be [groomed online](#). Some children and young people are [trafficked](#) into or within the UK for the purpose of sexual exploitation. Sexual exploitation can also happen to [young people in gangs](#). To raise awareness of Child Sexual Exploitation, Wiltshire Council and partners are participating in the National CSE awareness day on 18 March. We are asking all of our primary care centres to help us raise awareness. We will be contacting surgeries to help demonstrate to any young person that if they have concerns support is available. Enabling a young person to talk about the abuse that is happening to them is the first step to stopping it. For more information please contact 0300 0034565 or email noworries.nhswiltshire@nhs.net

Zika virus

The Zika virus is a mosquito-borne infection, which isn't harmful in most cases. However, it may be harmful for pregnancies, as it's been potentially linked to birth defects – specifically microcephaly. WHO has warned that Zika virus is likely to spread to all countries in the Americas where the climate is suitable for the affected mosquitoes. Most people don't have any symptoms but if symptoms do occur, they are usually mild and last around two to seven days. Commonly reported symptoms include: a low-grade fever; joint pain (with possible swelling, mainly in the smaller joints of the hands and feet); itching; rash, which is sometimes itchy; conjunctivitis (red eyes); headache and eye pain. Current advice is that women who are pregnant or planning to become pregnant should discuss their travel plans with their healthcare provider. [More advice can be found here](#).

Warm and Safe goes live on CareFirst

Wiltshire's public health team have recently been asked to review an affordable warmth health impact evaluation toolkit which is being written for the Department of Energy and Climate Change. The toolkit will help effectively assess the impact affordable warmth schemes have on health and wellbeing. The team will submit a case study based on our experience here in Wiltshire of utilising the adult social care data base CareFirst to record case details of referrals made to our Warm and Safe team. Wiltshire is one of the first authorities to integrate the work on improving cold homes across public health, public protection and social care. Visit www.warmandsafewiltshire.org.uk to find out more.

How we are helping people in crisis

Wiltshire has been successful as part of a regional group of local authorities in securing funding for ASIST suicide prevention training. Members of our staff will be attending a 'training the trainer' course at the beginning of April and will go on to deliver six courses in the county aimed at frontline staff who are most likely to come into contact with someone who may be at risk of suicide. The first two day course will take place on 10 and 11 May 2016 in Potterne. If you are interested in attending please contact Karen.spence@wiltshire.gov.uk as soon as possible. Please do circulate details to anyone you work with who may be interested.

Our approach to improving mental health

A new Five Year Forward View for Mental Health has been published by an independent taskforce set up by NHS England. At least one in four people will experience a mental health problem in their lifetime and one of our priorities is to improve mental and emotional health across Wiltshire. The taskforce recommends focusing on promoting good mental health, preventing poor mental health and helping people lead better lives as equal citizens through wider system integration. This is a positive endorsement of the approach that Wiltshire is taking with our Mental Health and Wellbeing Strategy and our plans address many of the key recommendations made. [You can read the full report here](#).

Injury prevention

Over the last six months we have been running injury prevention workshops with early year's practitioners. Over 70 practitioners have been trained in best practice for reducing injuries among young children in the home. The latest session in early February was held in Salisbury for community nurses who work in health visiting teams, visiting homes and working in clinics, to offer advice and support to parents. All children centre providers have also now attended a workshop. Participants are now including more evidence based injury prevention activity in their action plans and are cascading the training to other members of staff. Recently NICE has developed quality standards guidelines (QS107) for Reducing Unintentional Injury among the under 15s in the home. [You can find out more here](#).

A new nationwide campaign

Public Health England (PHE) is launching a new marketing-led behaviour change programme to help adults live healthier lives called 'One You'. It will be the biggest social marketing programme to launch since Change4Life and is arriving in early March 2016. More information will be available soon from PHE

Public Health Intelligence news

The [Wiltshire Intelligence Network](#) (WIN) provides numerous reports full of local information on a wide range of topics. Please visit the website for our latest reports.

[Public Health in the news this month:](#)

[Melksham Health and Wellbeing Centre top of the area board agenda](#) (17 Feb)

[Wiltshire's plan to tackle obesity – have your say](#) (17 Feb)

[DadPad - support for new dads](#) (8 Feb)

[Rethink Mental Illness to offer advocacy services for vulnerable people in Wiltshire](#) (1 Feb)

[Rainbow flag raised outside County Hall for start of Lesbian, Gay, Bisexual and Transgender History Month](#) (1 Feb)

[Support to make your 2016 as healthy as possible](#) (1 Feb)

For further information on any of the programmes of work mentioned please contact emily.kavanagh@wiltshire.gov.uk

MINUTES

Meeting: BRADFORD ON AVON AREA BOARD
Place: St Margarets Hall, Bradford on Avon, BA15 1DE
Date: 13 January 2016
Start Time: 6.30 pm
Finish Time: 9.00 pm

Please direct any enquiries on these minutes to: Kevin Fielding

Telephone: 01249 706612 or (e-mail) kevin.fielding@wiltshire.gov.uk

Papers available on the Council's website at www.wiltshire.gov.uk

In Attendance:

Wiltshire Councillors

Cllr Rosemary Brown, Cllr Trevor Carbin, Cllr Magnus Macdonald and Cllr Ian Torn

Wiltshire Council Officers

Peter Dunford – Community Engagement Manager
Kevin Fielding – Democratic Services Officer
Emma Coombs - Community Youth Officer

Town and Parish Councillors

Bradford on Avon Town Council - Alison Craddock & John Potter
Holt Parish Council – Andrew Pearce

Partners

Bradford Community Area Partnership – Jim Lynch
Local Youth Network – Cherry Riley
Wiltshire Police and Crime Commissioner – Naji Darwish

Total in attendance: 85

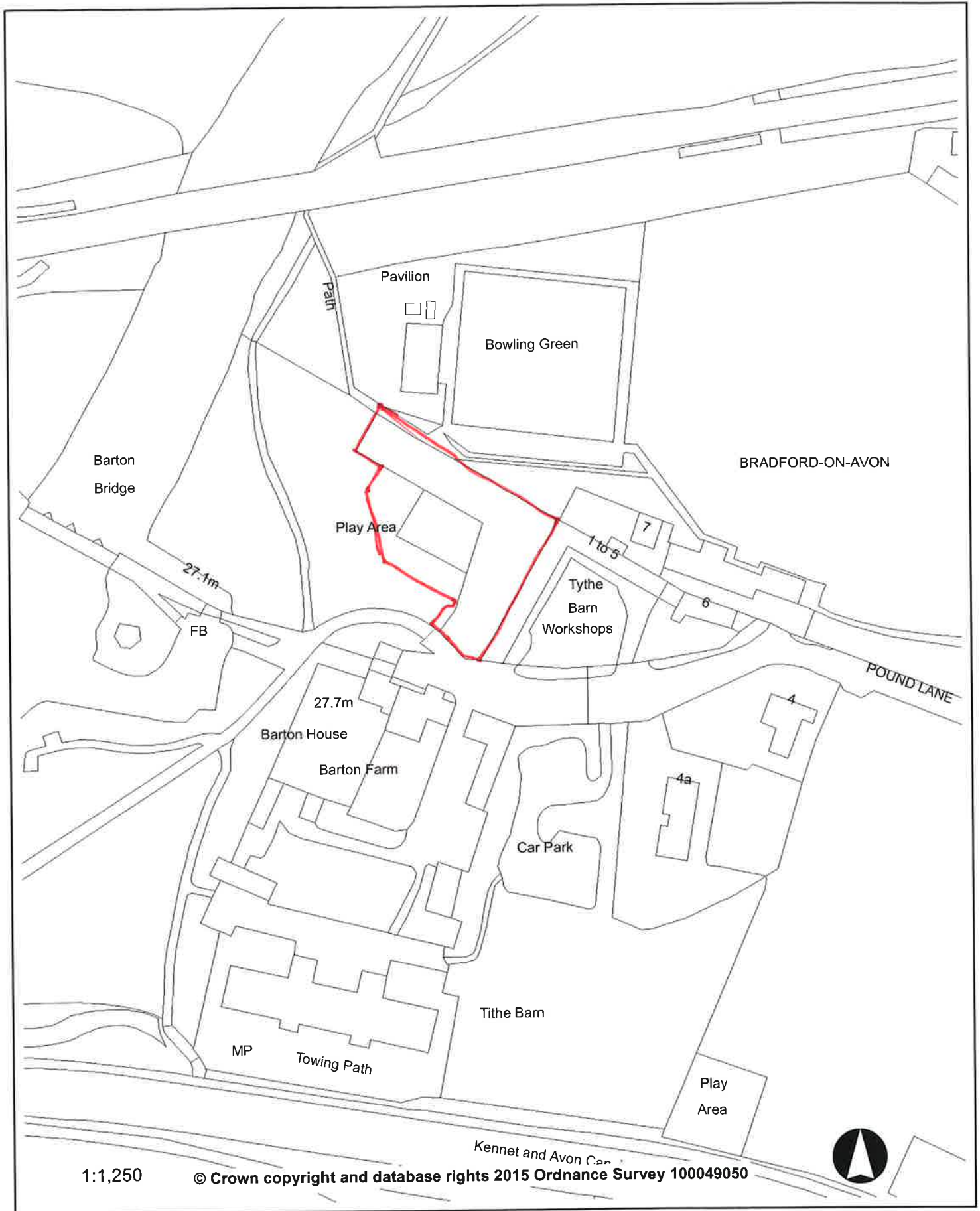
<u>Agenda Item No.</u>	<u>Summary of Issues Discussed and Decision</u>
1	<p><u>Re-opening of Tourist Information Centre and 2016 calendar of events</u></p> <p>Cllr John Potter – Bradford on Avon Town Council welcomed everybody to St Margarets Hall and the Bradford on Avon Area Board Tourism event.</p> <p>Cllr Potter gave a short presentation that outlined the re-opening of the Tourist Information Centre and 2016 calendar of events planned for Bradford on Avon.</p> <p>The Chairman thanked Cllr Potter for his presentation.</p>
2	<p><u>Brand Positioning of Bradford on Avon and its community area</u></p> <p>Roger Pride - Consultant, Heavenly gave a presentation that outlined his vision for the brand positioning of Bradford on Avon and its community area.</p> <p>The Chairman thanked Roger Pride for his presentation.</p>
3	<p><u>LEADER funding opportunities for business and tourism development</u></p> <p>Alan Truscott - Programme Manager, Vale Action gave a short presentation that highlighted funding through the LEADER Funding scheme.</p> <p>The Chairman thanked Alan Truscott for his presentation.</p>
4	<p><u>Clean for The Queen; 90th Birthday Street Parties; The Big Pledge</u></p> <p>Peter Dunford – Community Engagement Manager informed the Area Board of Wiltshire Council’s plans for its the Legacy campaigns for 2016 which would include:</p> <ul style="list-style-type: none"> • Clean for The Queen. • Queen’s 90th Birthday Street Parties. • The Big Pledge Road to Rio. • Getting Active- Walking and Cycling activities in Wiltshire.
5	<p><u>Declarations of Interest</u></p> <p>There were no declarations of interest.</p>

6	<p><u>Apologies for Absence</u></p> <p>Apologies were received from Matthew Midlane – Monkton Farleigh Parish Council.</p>
7	<p><u>Police and Crime Commissioner - Precept Consultation</u></p> <p>Naji Darwish - OPCC outlined the Precept Consultation.</p> <p>Points made included:</p> <p>Crime and Public Confidence</p> <ul style="list-style-type: none"> • Crime increased by 12% from December 2014 to November 2015. • 7th lowest crime rate nationally with 50.7 crimes per 1,000 population. • Public confidence measured by the OPCC Survey in 2015 is 83.7%, and had been consistently high since 2012. • Victim satisfaction to October 2015 is 84.3% which is around the national average. <p>A good HMIC Assessment of Wiltshire Police</p> <ul style="list-style-type: none"> • Performance is regularly assessed by Her Majesty's Inspector of Constabulary. Overall Wiltshire Police are rated as "good". • Our constabulary remains one of the best in the country. <p>Central Funding Announcement</p> <ul style="list-style-type: none"> • This years provisional settlement shows central funding reduce from £63.7m to £63.4m, a £0.3m reduction. • This will be the fifth straight year of central funding reductions. • Whilst this reduction is lower than previous years the loss of £0.3m with cost pressures (national wage agreement £0.8m, national pensions change impact on national insurance £2.0m) will result in significant savings still being required.

	<p>What is the budget?</p> <ul style="list-style-type: none"> • A £3.12 increase in Council Tax will give a budget of £105.695m compared to £103.956m for the current year. This would lead to a funding gap of £2.6m for policing in Wiltshire. • The Commissioner was committed to investing additional income from council tax in local policing. <p>How about the long term?</p> <ul style="list-style-type: none"> • The Chancellor's Autumn Statement promised a cash neutral position for policing however no detail per force is available. With no council tax increases the funding gap against the national average would grow. With small council tax increases the resources available for local policing are better protected. • The Area Board was assured by the Commissioner that local money would be spent on local policing. <p>Question raised from the floor included:</p> <p>Why do you have to increase your precept when you received no cuts in Central Government funding at the last budget?</p> <p><i>a. There was still a slight reduction in funding as well as the force having to budget for extra National Insurance contributions and investing heavily in new technology.</i></p> <p>The Chairman thanked the Naji Darwish for his presentation.</p> <p>8 <u>Community Asset Transfer: Culver Close</u></p> <p>The Area Board was asked to consider an application submitted by Bradford on Avon Town Council for the transfer of Culver Close Recreation Ground.</p> <p>Decision</p> <ul style="list-style-type: none"> • That the Bradford on Avon Area Board approves the transfer of the Culver Close Recreation Ground to Bradford on Avon Town Council. <p>9 <u>Youth Grants, recommended for approval by LYN Management Group</u></p> <p>The Bradford on Avon Area Board were asked to consider four applications for youth funding:</p>
--	--

	<p>Decision Dorothy House Children and Young People’s Service Project awarded £2802.00</p> <p>Decision Continuation of the Young Curators Programme awarded £1600.00</p> <p>Decision Bradford on Avon Youth Centre – Dance back to 1914 Project awarded £2750.00</p> <p>Decision Bradford on Avon Youth Centre awarded £5,000</p> <p>The Chairman thanked the LYN for bringing the four applications to the Area Board for approval.</p>
10	<p><u>Chairman's Announcements</u></p> <p>The following Chairman’s Announcements were noted:</p> <ul style="list-style-type: none"> • Closure of BoA Childrens’ Centre – ongoing discussions, looking at how to deliver an outreach service using the Library or the Youth Centre. • Consultation on Public Transport Review – written report. • Wiltshire Good Neighbour Scheme – written report. • Your Care Your Support Wiltshire – written report. • Bradford on Avon Transport and Accessibility Forum at St.Margaret’s Hall on Wednesday 10 February.
11	<p><u>Partner Updates</u></p> <p>The following Partner Updates were noted:</p> <ul style="list-style-type: none"> • Wiltshire Police – written report. • Healthwatch Wiltshire Update – written report. • NHS/ CCG Update – written report.

12	<p><u>Minutes</u></p> <p>Decision</p> <ul style="list-style-type: none">• The minutes of the Bradford on Avon Area Board meeting held on 11 November 2015 were signed as the correct record.• The minutes of the Local Youth Network Management Group held on 7 December 2015 were signed as the correct record.• The minutes of the Bradford on Avon Community Area Transport Group meeting held on 2 November 2015 were deferred for detailed consideration.
13	<p><u>Close</u></p>



Local Youth Network Meeting- Minutes

Monday 8th February 2016 Bradford-on-Avon Community Centre

Present:

- Skye May, Cherry Riley- Local Youth Network Chairs
- Emma Coombs, Community Youth Officer
- Councillor Magnus McDonald, Wiltshire Council
- Karen Green, Early Help
- Councillor Rosemary Brown, Wiltshire Council
- Peter Dunford, Bradford-on-Avon Area Board
- Bob Crouch, Lucy Hulbert-Brown- Holt Youth Club
- Jim Lynch, BoACAN
- Councillor Trevor Carbin, Wiltshire Council
- Councillor Rosemary Brown, Wiltshire Council
- James Vaughton, Youth For Christ

Apologies:

- Councillor Ian Thorne, Town Council and Wiltshire Council
- Jade Britton, Young Person
- Karen Butler, St Laurence School
- Laura Pictor- Selwood Housing

BoACAN update:

- J.L gave an update on BoACAN.
- Spoke about the previous years workshop.
- Will be put into writing, the new project idea.
- The funds are still in BoACAN's bank account due to projects not going forward from the creative youth network for the fringe festival and roots festival.
- DBS checks were made for the projects.
- Spoke about community engagement project.

- Avon rubber factory events happened since the Iron juke key to Avon rubber. Preservation trust wants to return the Iron Juke from Bristol to Kingston mills. Working on filming group work.
- £18,000 heritage lottery fund bid in to evidence the community working, joint applicant, preservation trust, BoACAN, museum.
- Spoke about 4 funded youth projects.
- Intention to make a creative youth network, involving different groups such as the LYN, Holt Youth Club and BoA Youth Club etc.
- Selwood housing to be involved.

Rules:

- C.R and S.M presented the rules within the LYN to the group. The LYN members agreed to the rules shown.

Budget:

- E.C talked through the budget.
- Balance of £21,890.49.
- Spoke about an over-budget of £1,600 to fully fund all recent applicants' grants.
- Explained there will be no roll over with the funds to the next financial year, at this time.

Grant Applications:

- K.G spoke about application summaries to take place before scoring applications, as a reminder for the group of each submission.
- Tried one summary for an application and the group found this useful.
- Conflicts of interest were resolved.
- The group scored applications.
- Money still needing to be paid for the Procurements from the last Area Board.
- LYN members agreed with the young peoples scoring for all 5 applications.

- Scouts:
- Group asked about accounts from 2014- E.C to follow up
- Recommend to part fund- **£4000**

- Skate Park:
- The group asked how many young people are involved- E.C to follow up
- Recommend to part fund- **£2823**

- Cadets: Recommend to part fund-**£4500**

- Rugby: Recommend to part fund- **£4500**

- Holt Youth Club: Recommend to fully fund- **£5500**

Youth forum update:

- E.C and P.D spoke about the youth forum.
- Top priorities were spoken about from the youth forum.
- E.C spoke about the youth café and funding for next year. In progress speaking with Chris Brown.
- Looking into how astro turf can be accessible for all individuals.
- Open mic night provided by WMC during Bradford roots festival
- Social media – LYN Facebook page and to advertise out
- Volunteering – PD looking at how this can take place in BoA, time credits.

Procurement:

- E.C spoke about the procurements, including: Active Trowbridge, Street dance and Zorb Football.
- Looking at possible activities for young people in Bradford area for the holidays.

Assigning roles:

- The LYN MG spoke about the assignment of roles within the group.
- Members were assigned roles: **Budget- P.D ; Town and rural area representatives- T.C, M.M, R.B, I.T; Safeguarding- E.C, Quality assurance and inclusion- S.M, Promotion- All LYNMG members.**

Clean for the Queen:

- P.D spoke about the Clean for the Queen in Bradford on Avon. Spoke about getting young people involved with the community.

AOB:

- **9th March-** Next Area Board
- LYN MG spoke about hearing from applicants at the Area Board; specifically Young Curators. E.C to repost on behalf of the applicant if they are unable to attend.
- Spoke about venues for LYN meetings. Lock inn, Fat fowl, Library, Teapot, Sainsbury, St. Laurence, and which is the best space for young people to attend.

Confirmation of next meeting:

- **Monday 4th April**



Bradford On Avon Area Board **Wednesday 09th March, 2016**

Welcome to the third report from your Community Policing Team (CPT).

We are continuing to develop the CPT pilot across your Policing area and are currently in a period of review and assessment. We are looking at ways to further develop our approach and continually look to improve on our performance. We are committed to delivering local Policing in your area that addresses the threats, harms and risks in your local community whilst working within the current austerity measures which are quite challenging. We are fluid in our approach and will look to evolve as demand and circumstances develop. It is important to hear your views in how we can find the balances and address the issues that affect your communities. Please continue to leave your feedback at feedback@wiltshire.police.uk

I would like to introduce you all to the community messaging website; <https://www.wiltsmessaging.co.uk/>. This is a website open to everyone, that the Police and Crime Commissioner has introduced in order to provide local communities with information about what is affecting their area. The key highlights are:

- FREE messages from your local police officers about policing and crime matters in your area
- You can receive free messages by email, text or voicemail
- You can choose which organisations to receive messages from and the type of information you receive
- Currently messages are being sent by Wiltshire Police, Wiltshire and Swindon Neighbourhood Watch and Action Fraud. This will soon be extending to include other watch schemes, including Horse and Farm Watch, and potentially partner agencies in the future
- You can reply to messages from your local officers to help them better police your area, such as by responding to police appeals for information
- You can also join a neighbourhood Watch scheme in your area or request to start a new one

feedback@wiltshire.police.uk

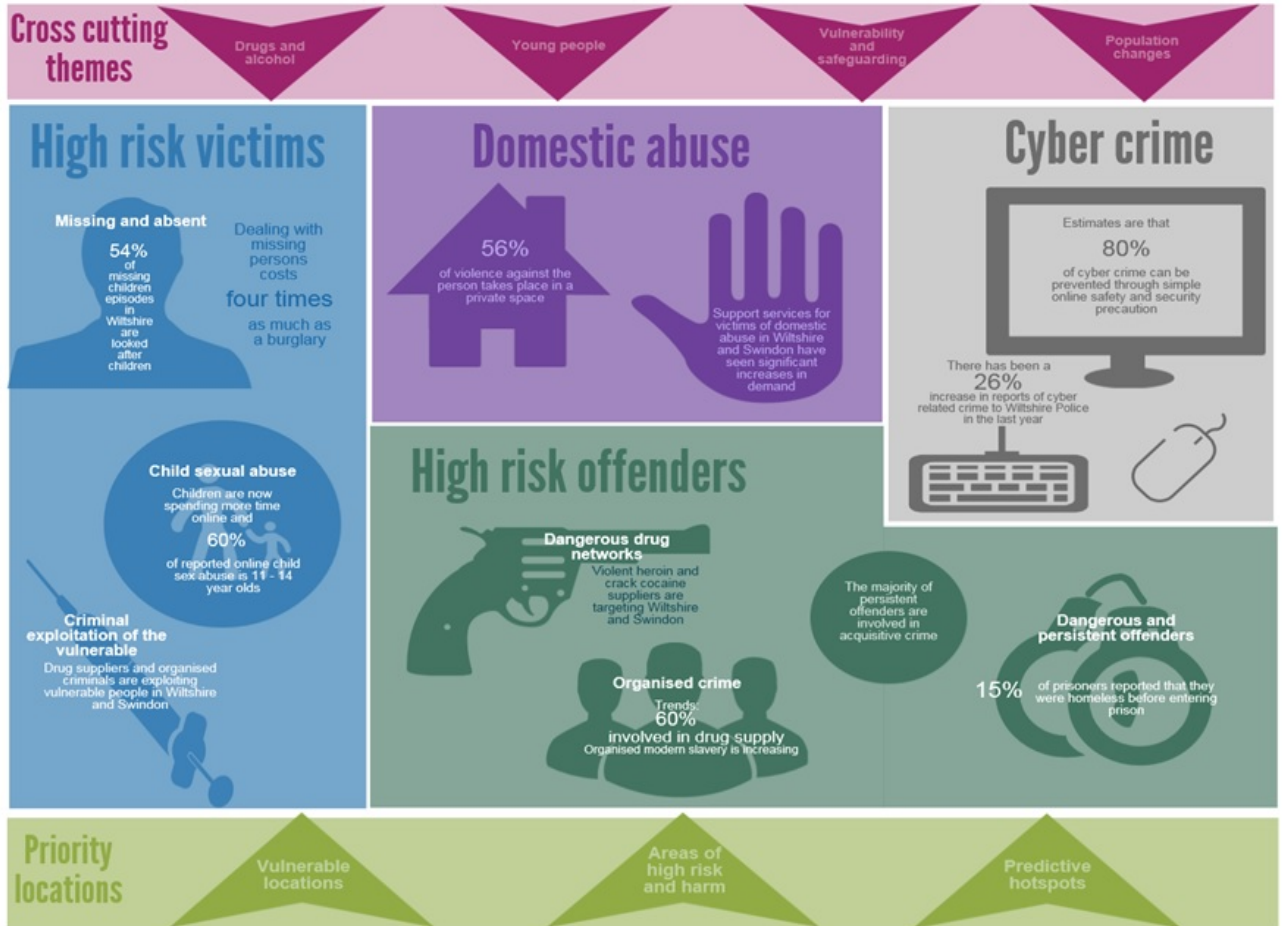
We are currently want to enhance community messaging by ensuring suitable training is given to my staff. The website itself is very simple and straight forward to navigate and I would encourage you to have a look and sign up.

Team updates

We are also pleased to welcome our new Deputy Head , Sgt Louis McCoy. Louis has joined us from the Chippenham area and brings with him 13yrs of Policing experience having worked in a variety of roles across Wiltshire Police. Louis is very pleased to have joined the team and is looking forward to supporting and developing the team as well as working with our local community. Please follow Louis on his twitter account for updates on community matters and information around our daily Policing activities.

Wiltshire Control Strategy

We are continuing to base our Policing activities on the control strategy and working with the 4 P's, Prevent, Pursue, Protect and Prepare. Under this strategy we are looking to maintain our consistent approach to addressing the threat, harm and risk that causes the greatest harm to your communities and this is a daily evolving situation that requires a degree of fluidity.



Our Control Strategy has been created to describe the current and emerging threats that are of the greatest impact to our Communities. This is set annually following the analysis of threats, harms and risks. You will have seen that we have moved away from a statistics lead report as this doesn't always capture the true context of the threat, harm and risk but we will inform you of any key issues in your areas. We are still able and actively do review figures, trends and intelligence and should anything present itself as an emerging issues, we will endeavor to address it at the earliest opportunity.

My theme for this report will focus on missing and absent.

Missing and Absent

The importance and impact of a missing person should not be underestimated.

The National Crime Agency's (NCA) missing persons bureau reports that more than 300,000 reports of missing people are received by the police service every year, which equates to more than 800 reports a day.

With estimates suggesting that each report costs between £1,325 and £2,415, the financial costs of responding to this volume of reports are significant. However, with more than 750 fatal cases each year and a far greater number for whom missing is an indicator of being at risk of harm, the human cost is incalculable.

- Missing is defined as anyone whose whereabouts cannot be established and where the circumstances are out of character or the context suggests the person may be subject of a crime or at risk of harm to themselves or another.
- Absent is defined as a person not at a place where they are expected or required to be and there is no apparent risk.

It should be remembered that a person going missing could be a symptom of a much bigger issue and that person could be connected to criminality either as a victim or as an offender.

Nearly two-thirds of all reports relate to children and young people under the age of 18. We have a dedicated missing persons co-ordinator who works within the multi-agency safeguarding hub (MASH) at County Hall, Trowbridge and we actively link in with all relevant departments that we feel could benefit a young person who has been missing to help and support them from going missing again. We look to debrief each missing person so we can better understand them and the reason that they went missing.

It can be extremely worrying for parents when their child goes missing and it's a fine balance between allowing them their independence to grow up and make mistakes and safeguarding them from harm. Some key questions to ask yourself about your child:

- Do you know who they are speaking to online?
- Do you know who their friends are?
- Do you know where their friends live?
- Do you know what is going on with their social life?
- Do you know if they are being bullied?
- Do you know if they are socialising with older males/females?
- Are they a victim of crime?

Our public protection department holds the responsibility for our missing persons procedures, protocols and development and in the next few months we are launching a new platform on which to record all our missing person details within Wiltshire Police. This is with a view to developing our approach and good quality work we already undertake. We work closely across a number of partner agencies when appropriate to investigate missing persons reports and will look to find out the underlying reason why that person went missing and what can be done to prevent it in the future.

Below are 2 useful websites that can offer help, support, advice and guidance should someone you know go missing.

<http://www.missingpeople.org.uk/> <http://missingpersons.police.uk/>

Local Crimes.

There has been an increase in shed/garage burglaries. The Community Policing Team have increased patrols and welcome any information from witnesses. It appears that most premises have been left insecure and therefore take this opportunity to remind everyone to lock and secure their property.

For a detailed breakdown of the crime in your area visit...

<https://www.police.uk/wiltshire/>

James Brain

Community Policing Team Inspector

Trowbridge & Warminster

feedback@wiltshire.police.uk

NOT PROTECTIVELY MARKED

To: All Wiltshire Council CAB Chairmen; CEMS & DSO's; WfCAP

From: Michael Franklin Wiltshire Fire Rescue Service

Date: 25 January 2016

Subject: Dorset & Wiltshire Fire & Rescue Service future engagement with Community Area Boards.

I am sure that you will be aware that as of the 1st April 2016 the Dorset and Wiltshire Fire & Rescue Service will come into being.

Operationally the service's 'Wiltshire Council area' will be commanded by Area Manager Gus Cuthbert (gus.cuthbert@wiltsfire.gov.uk) assisted by his deputy, Group Manager Iain Hunter (iain.hunter@wiltsfire.gov.uk)

The local management of fire stations within the Wiltshire Council area has been aligned with Community Area Board areas comprising of seven Districts, each managed by a District Commander of Station Manager role.

As of the 010416, my role as Partnership & Community Engagement Manager will not exist in the new organisation and District Commanders will have responsibility for community engagement and partnership working within their Districts and they will be engaging with CABs and producing CAB briefings.

During the transitional stage will CEMs' and DSOs' please send all communications; meeting requests or operational matters of a non-urgent nature to the District Commanders as detailed below. I can still be used as a point of contact until 310316.

DWFRS District	Fire Stations	CAB covered	District Commander
Amesbury	Amesbury; Pewsey Ludgershall	Amesbury; Tidworth Pewsey	mike.bagnall@wiltsfire.gov.uk
Chippenham	Chippenham, Corsham Malmesbury	Chippenham Corsham Malmesbury	darren.nixon@wiltsfire.gov.uk assisted by ade.hurren@wiltsfire.gov.uk
Devizes	Calne; Devizes, Melksham	Calne; Devizes, Melksham	jack.nicholson@wiltsfire.gov.uk
Marlborough	Cricklade;RWB, Marlborough, Ramsbury	RWB &Cricklade, Marlborough	jason.underwood@wiltsfire.gov.uk
Salisbury	Salisbury ;Wilton	Salisbury; Southern Wilts	louis.minchella@dorsetfire.gov.uk
Trowbridge	Bradford on Avon;Trowbridge, Westbury	BoA; Trowbridge Westbury	andy.green@wiltsfire.gov.uk
Warminster	Mere, Tisbury Warminster	Warminster SW Wilts	denver.walton@wiltsfire.gov.uk Assisted by darren.nixon@wiltsfire.gov.uk

Mike Franklin Partnerships & Community Engagement Manager

NOT PROTECTIVELY MARKED

March 2016

New Daisy service on target for summer opening

A brand new building, which will provide specialised services for individuals with complex learning disabilities and challenging behaviour, is now near completion and will open this summer.

The facility, called 'The Daisy' and based near Green Lane Hospital in Devizes, has been commissioned by NHS Wiltshire Clinical Commissioning Group and services will be provided by Avon and Wiltshire Mental Health Partnership NHS Trust (AWP). People will receive person-centred care and support within a local residential setting, allowing them to live as independently as possible within a community setting. Each individual living area will be fully equipped with a kitchen, en-suite bathroom and lounge area and people have contributed to the design of their own living areas by choosing their colour schemes and soft furnishing – a home from home.

The community aspect of this build will allow people living there to engage with the surrounding area, and involve them at the heart of the community. People will be supported to maintain their family relationships, build a fulfilled life through participation in the community, such as education, sports and leisure and they will be able to access mainstream services when required to ensure that their health and social needs are met.



Wiltshire's plan to tackle obesity: have your say

Wiltshire residents are being asked to have their say on NHS Wiltshire Clinical Commissioning Group (CCG) and Wiltshire Council's plan to tackle the issue of obesity in the county.

Obesity impacts on everyone, so the CCG and council are keen to hear from as many people as possible to get their feedback on this draft strategy ahead of the consultation deadline on 30 April.

In Wiltshire, 29.3% of children aged 10 to 11 years are overweight or obese, along with 63.6% of adults.

The draft strategy is based on feedback from last year's Wiltshire obesity Summit and on evidence of what works in preventing and addressing the challenges posed by obesity.

The strategy aims to halt and then reverse the obesity situation in the county, and will complement and build on work already underway to support Wiltshire residents to achieve and maintain a healthy weight.

To take part in the consultation people should visit <http://www.wiltshire.gov.uk/obesity-strategy-2016-consultation.htm>

Attention Deficit Hyperactivity Disorder (ADHD) in Wiltshire

The contract for ADHD services in Wiltshire is currently held by Avon and Wiltshire Mental Health Partnership Trust (AWP) and this contract is due to finish at the end of March 2016.

Whilst a review of the whole contract is being undertaken, a temporary ADHD contract with AWP has been negotiated to run from 1 March until 31 August.

This extension will ensure that a large proportion of the current services can continue until a permanent two year contract can be agreed, and during this period AWP will continue to provide an ongoing service for:

- Existing patients who have already been assessed and diagnosed
- Existing patients who require ongoing follow up and prescribing
- Patients already being cared for under the shared care process
- Urgent and/or prioritised new referrals as approved by the CCG Exceptions Panel

The new contract will start on 1 September 2016.

Developing mental health services for veterans

The NHS has launched a national engagement on mental health services for veterans.

The engagement will run until 31 March 2016 and aims to capture views and experiences of these services from a range of stakeholders, including veterans who have or have had a mental health illness, their families and carers, service charities, commissioners and providers offering treatment and support in this area.

Findings from the engagement will help to ensure that future mental health services for veterans are accessible, provide high-quality and sensitive care, treatment and support, and best meet the needs of veterans, regardless of when they leave the armed forces.

Currently, the NHS commissions 12 mental health services across England for veterans. These were set up in 2010 following publication of "Fighting Fit: a mental health plan for servicemen and veterans". The contract on these services are due in 2016/17 and this provides the NHS with a significant opportunity to ask people about their views and experiences of the current services. This will also allow the NHS to explore why some veterans have not sought or received support and treatment.

The NHS wants to hear from people who have served in the armed forces and have used or are currently using NHS veterans' mental health services. We also want to hear from family members and carers of veterans who have or have had mental health difficulties, as well as staff and organisations that are providing mental health care, treatment and support for veterans and their families.

To take part in the engagement and share your views, which runs from 25 January to 31 March 2016, please visit: <https://www.engage.england.nhs.uk/survey/veterans-mental-health-services>.

For further information on the engagement exercise or veterans' mental health services in your area, please email ENGLAND.VMH-Engagementhub@nhs.net

Stay well this Winter campaign

Wiltshire Clinical Commissioning Group are part of the **Stay Well This Winter** national campaign to raise awareness of what you can do to stay healthy this winter and what services are available if you need additional help.

The national **Stay Well This Winter** campaign started on 5 October 2015 and will run until 27 March 2016 and will also be providing advice to those with long-term health conditions, over 65s, pregnant women and parents of under-sevens.

Get the jab, get Flu Safe

NHS Wiltshire CCG is encouraging people to have their flu jab. Flu is a highly contagious infection that anyone can catch, but it can be very serious for some. For most people flu is a relatively mild illness from which they recover within a week or two – yet every year people, especially those at risk, become seriously ill because they don't get their free flu jab.

Flu is not the same as a cold and it affects people of all ages. If you or someone you care for is in any of the at-risk groups listed below you can get a free flu jab from your GP.

- everyone aged 65 years and over
- all pregnant women irrespective of their stage of pregnancy

- Adults and children over six months with long term heart, lung, kidney, liver or neurological conditions
- people with diabetes
- anyone who has a reduced immunity because of an illness or medical condition
- people with asthma
- anyone in long-stay residential care
- carers of disabled or elderly people and healthcare workers that are in direct contact with patients

Get the best protection for yourself and your family by being flu free this winter and book your appointment today.

Staying Healthy this winter

NHS Wiltshire CCG is urging people to keep warm and well this winter, especially as the nights are starting to draw in and the temperature is dropping.

The cold can have serious consequences as it can increase the risk of strokes and heart attacks as well as causing people to catch colds and flu. Wrapping up warm, keeping the heating turned up, making sure you have enough winter food supplies and keeping a well-stocked medical cabinet in case you do catch a cold or flu are all sensible steps to take.

Some tops tips on staying warm and well this winter.

1. Keep your home warm – set your central heating to between 65 and 70 degrees Fahrenheit (18-21 degrees centigrade). Heat the room you sit in during the day to 70 degrees, and your bedroom to 65 degrees. When it's very cold, set the heating to come on earlier so that you're not waiting for your home to warm up.
2. Have your flu jab. Everyone over 65, or with a wide variety of health conditions, is entitled to one free of charge. Immunity takes effect almost immediately, so even though a flu outbreak is currently well underway, you can still protect yourself by getting the jab – just call your GP to make an appointment.
3. If you do fall ill with flu, it's best to stay at home. Flu is caused by a virus, and cannot be treated with antibiotics – so a visit to your GP is not necessarily the best course of action.
4. Vomiting and diarrhoea bugs caused by norovirus are common and very infectious. This can be a very unpleasant condition, but the best advice is to stay at home and drink plenty of fluids until the symptoms pass. Norovirus is highly infectious, with an incubation period of between one and three days. For that reason, you should wait 48 hours after symptoms have stopped before going back to work or your children go back to school.
5. Make sure you have enough winter supplies and keep a well-stocked medicine cabinet, with supplies of ibuprofen, paracetamol and your favourite cold remedy at hand.

Where to go when you're ill - The following points should be helpful when deciding who to contact.

- Pharmacies offer over-the-counter medicines and advice. As well as being open during regular retail hours, they operate an out-of-hours service on a rota basis;
- Call NHS 111 for advice or go to NHS Choices website www.nhs.uk. They can give a wide range of advice and information about many conditions;
- Use the minor injuries units at Chippenham and Trowbridge or the walk-in centres in Swindon and Salisbury for cuts, burns and other injuries – but not for colds, flu or vomiting;
- Make an appointment with your own GP - an out-of-hours service is also available;
- If it is a genuine emergency, go to your local A&E department or call 999 for an ambulance

Keep an eye on elderly or frail friends, neighbours and relatives this winter and join us in helping Wiltshire stay well this winter.



Area Board Update - March 2016

The Care Quality Commission (CQC) inspection of South Western Ambulance Service NHS Foundation Trust

The CQC is the independent regulator of all health and adult social care in England. In June 2016 the CQC will be inspecting services provided by the South Western Ambulance Service NHS Foundation Trust. It wants to hear from local people about their experiences of services to help them to understand what is good and bad about the care provided by this service.

If you would like to provide any feedback on your experiences of services, please contact the CQC: telephone 0300 0616161; email tellus@cqc.org.uk; website www.cqc.org.uk/sye. Alternatively you can contact Healthwatch Wiltshire as we work closely with the CQC to support its inspections.

Your Care Your Support Wiltshire

Local people often tell Healthwatch Wiltshire that they want good quality information about health and care so that they can live more independently and make good choices. We are working with Wiltshire Council and NHS Wiltshire Clinical Commissioning group, on a new health and care information website called Your Care Your Support Wiltshire: www.yourcareyoursupportwiltshire.org.uk. The aim is that the website becomes the 'go to place' for information about health and care. It includes information about health conditions, paying for care advice on how to stay fit and healthy. It also has a directory of support services, club and societies. We know that not everyone uses the internet so we are also making sure that professional staff know about the website so that they can print off information for their patients and customers. It is an exciting time because we are actively calling out to local people and professionals to tell us what they would like to be included on the website. We are also encouraging local groups and services to make sure that they are included on the site.

Would you like to get involved? We are looking for people to provide feedback on the website or to get involved in a focus group or reader's panels. This is your chance to help build a really useful health and social care website fit for Wiltshire people.

Young Listeners - trained and raring to go!

Healthwatch Wiltshire has an important role in speaking up for all local people on health and care issues. And that includes children and young people! We are excited about a new project we are working on with Youth Action Wiltshire (part of Community First) which will make sure that children and young people are included in our work. The project is recruiting young people and training them up to become 'Young Listeners', who are going to be talking directly with children and young people to find out their views and experiences of health and care—i.e.

being young carers, living with a special educational need, and about their own emotional wellbeing. Over the course of the project the Young Listeners will gather feedback from over 100 children and young people. Ultimately we want the voices of Wiltshire's children and young people to be heard by the people who are buying and providing health and care services.

We would like as many children and young people as possible to be involved in this project. So if you or your child, or someone you support or look after would be interested in sharing their experiences of using health or social care services please get in touch.

Contact us:

Tel 01225 434218

info@healthwatchwiltshire.co.uk

www.healthwatchwiltshire.co.uk

Report to Bradford on Avon Area Board
Date of meeting 9th March 2016
Title of report Youth Grant Funding

Purpose of the Report:

To consider the applications for funding listed below together with the recommendations of the Local Youth Network (LYN) Management Group.

Applicant	Amount requested	LYN Management Group recommendation
Holt Youth Club	£5,500	Full
Bobcats – Bradford on Avon Girls Rugby Club	£5,000	Part £4,500
Bradford on Avon Air Cadets	£4,909.84	Part £4,500
Holt Skatepark Project	£3,000	Part £2,823
1 st BoA Scouts HQ	£4,500	Part £4,000

1. Background

The recommendation from the LYN Management Group has been made in accordance with the following guidelines:

- Leaders guidance for Community Area Boards on Positive Activities for Young People
- Positive Activities for Young People local Youth Network Terms of Reference
- Positive Activities Toolkit for Community Area Boards

Young people have considered this application and identified it as a priority for Area Board funding.

2. Main Considerations

- 2.1. Councillors will need to be satisfied that Youth Grant Funding awarded in the 2015/2016 year are made to projects that can realistically proceed within a year of it being awarded.
- 2.2. Councillors will need to decide and be assured that young people and the community will benefit from the funding being awarded and the project/positive activity proceeding. The application should meet the identified needs, priorities and outcomes for young people in the areas, as identified in the LYN Needs Assessment and Strategic Plan.
- 2.3. Councillors will need to ensure measures have been taken in relation to safeguarding children and young people.
- 2.4. Councillors will need to ensure that young people have been central to each stage of this Youth Grant Funding application.

3. Environmental & Community Implications

Youth Grant Funding will contribute to the continuance and/or improvement of cultural, social and community activity and wellbeing in the community area, the extent of which will be dependent upon the individual project.

4. Financial Implications

Financial provision had been made to cover this expenditure.

5. Legal Implications

There are no specific legal implications related to this report.

6. Human Resources Implications

There are no specific human resources implications related to this report.

7. Equality and Inclusion Implications

Ensuring that Community Area Boards and LYNs fully consider the equality impacts of their decisions in designing local positive activities for young people is essential to meeting the Council's Public Sector Equality Duty.

8. Safeguarding Implications

The Area Board has ensured that the necessary policies and procedures are in place to safeguard children and young people. The Community Youth Officer has assessed this application agreed it meets safeguarding requirements.

9. Applications for consideration

Application ID	Applicant	Project Proposal	Requested
ID 241 (hyper link)	Holt Youth Club	Full	£5,500
<p>Project description Broughton Gifford and Holt Youth Group is run on a weekly basis. The session runs each Wednesday evening from 7-830. The Youth Group is an open access group available to all young people aged 11-19 in the local area. The Youth group strives to provide a safe place for young people to participate in meaningful activities and informal education such as cooking sports learning about sexual health and relationships. The Youth group has been running for nearly 20 years and is greatly supported by the community in Holt. We work in partnership with Youth Action Wiltshire. Youth Action Wiltshire provides training opportunities for staff and volunteers and hold regular organised trips for the young people to learn new skills and develop socially.</p>			
<p>Recommendation of the Local Youth Network Management Group That the application meets the grant criteria and is approved for the amount of £, subject to the following conditions: All policies are up to date and seen by the Community Youth Officer Emma Coombs.</p>			

Application ID	Applicant	Project Proposal	Requested
ID 244 (hyper link)	Bobcats – Bradford on Avon Girls Rugby Club	Part - £4,500	£5,000

Project description

In the 2014/15 season Bradford on Avon Rugby Football Club supported one of the girls fathers Chris Eke to establish a girls rugby team because his daughter would have been excluded from playing rugby at her local club after turning 13 years old by RFU regulation 15. The next nearest club in Wiltshire which has a team for a 13 year old girl is at least 30 minutes drive from Bradford on Avon. Since Chris started the Bobcats on an informal basis in 2014 the team has grown in numbers by word of mouth. Note. Please see attached quotes from the 14 year-old Bobcats about what the team means to them and what the team needs. The club would now like to find funding to stabilise and grow the Bobcats in line with a national strategy to get more women into playing rugby particularly given the national teams success in the Womens Rugby World Cup in 2014. This project would provide a legacy of equipment training and support for the girls rugby team.

Recommendation of the Local Youth Network Management Group

That the application meets the grant criteria and is approved for the amount of £, subject to the following conditions:

All policies are up to date and seen by the Community Youth Officer Emma Coombs.

Application ID	Applicant	Project Proposal	Requested
ID 242 (hyper link)	Bradford on Avon Air Cadets	Part - £4,500	£4,909.84

Project description

BOA ATC is a thriving youth organisation in the town open to everyone between the ages of 13 and 19. The squadron is an active member of the community engaging with residents and other volunteer organisations such as Lions and the town council. Structured activities include The Duke of Edinburgh Award and BTEC qualifications in Avionics both requiring up-to-date computers with internet access and Microsoft Office. Existing equipment is extremely dated and now prevents the squadron accessing these crucial activities. We propose the installation of a new IT suite to facilitate participation in these activities for around 30 young people.

Recommendation of the Local Youth Network Management Group

That the application meets the grant criteria and is approved for the amount of £, subject to the following conditions:

All policies are up to date and seen by the Community Youth Officer Emma Coombs.

Application ID	Applicant	Project Proposal	Requested
ID 210 (hyper link)	1 st BoA Scouts HQ	Part - £4,000	£4,500

Project description

To take steps to re-establish the Explorer Section which ceased due to lack of leaders and secure additional funding to assist in replacing the existing inadequate 25 year heating system in the main hall and install for the first time a heating system in the toilets entrance hall and small meeting room. The entrance hall kitchen and toilet facilities has recently undergone a major refurbishment and now needs heating to be installed as a further improvement project. Appropriate facilities will greatly assist in securing leaders to enable the group to increase its number of sections but more importantly to re-introduce an Explorer section for children aged 12-17 years. The priority of works is determined by the leaders and young children.

Recommendation of the Local Youth Network Management Group

That the application meets the grant criteria and is approved for the amount of £, subject to the following conditions:

All polices are up to date and seen by the Community Youth Officer Emma Coombs.

Application ID	Applicant	Project Proposal	Requested
ID 246 (hyper link)	Holt Skatepark Project	Part- £2,823	£3,000
Project description This project involves youths in planning fundraising building and using their own skatepark. Having the youth club at the heart of this project will help us to involve the youths from the beginning. The youth club is committed to equality and safeguarding. The skatepark will encourage young people and children to have fun doing a healthy outside activity. This project is all inclusive for anyone who has a skateboard scooter or rollerblades boys and girls. By mixing age groups we hope to encourage teenagers to behave positively by sharing skills with the next generation. If this project is successful it will show the need for a more permanent Skatepark.			
Recommendation of the Local Youth Network Management Group That the application meets the grant criteria and is approved for the amount of £, subject to the following conditions: All polices are up to date and seen by the Community Youth Officer Emma Coombs.			



No unpublished documents have been relied upon in the preparation of this report

Report Author Name: Emma Coombs, Title: Community Youth Officer
Tel: 07768980748 Email: emma.coombs@wiltshire.gov.uk

REVENUE

Budget

Budget Code: 30610

LHF	£26,790.00
U11-19 Funding (inc roll forward)	£3,351.86
LYN Funding	£11,426.00
Roll forward	£7,143.24
Awarded	£26,821
Balance :	£21,890.49

Projects no.	14
Projects value	£53,886
Leverage	£2.0

Expenditure	Recipient	Project cost	Amount awarded	Award date	Payment date
LYN funding	Holt Youth Club youthwork project	£6,746.00	£3,000.00	13/05/2015	20/05/2015
LYN funding	Wilt Music Centre young curators	£3,970.00	£1,200.00	13/05/2015	09/06/2015
LYN funding	Relateen counselling project	£17,561.00	£2,000.00	13/05/2015	28/07/2015
LYN funding	BOACAN creative youth engagement	£4,000.00	£1,500.00	13/05/2015	23/06/2015
Other Youth	Magna Carta (11-19) int transfer	£500.00	£500.00	00/00/15	24/06/2015
Other Youth	Magna Carta van hire (p cash)	£73.80	£73.80	00/00/15	15/06/2015
Other Youth	Fuel for above (petty cash)	£11.26	£11.26	00/00/15	15/06/2015
Other Youth	Made in BOA magna carta	£148.75	£148.75	00/00/15	24/06/2015
LYN funding	Summer Programme	£864.80	£864.80	15/07/2015	04/09/2015
LYN funding	Amazon gift vouchers	£50.00	£50.00	11/11/2015	11/11/2015
LYN funding	St Laurence School	£120.00	£120.00	11/11/2015	19/11/2015
LYN funding	Bradford Town Youth Football Club	£6,309.56	£5,000.00	11/11/2015	24/11/2015
LYN funding	Dorothy House Children and Young People's Service Project	£2,802.00	£2,802.00	13/01/2016	21/01/2016
LYN funding	Wiltshire Music Centre Young Curators Programme	£2,779.00	£1,600.00	13/01/2016	21/01/2016
LYN funding	Bradford on Avon Youth Centre - Dancing back to 1914 Project	£2,750.00	£2,750.00	13/01/2016	00/00/15

LYN funding	BoA TC Bradford on Avon Youth Community Centre	£5,000.00	£5,000.00	13/01/2016	17/02/2016
LYN funding	BoA Youth Club - Zorb Football	£200.00	£200.00	03/02/2016	11/02/2016

Report on Transport and Accessibility Forum

Date: 10th February 2016

Venue; St Margaret's Hall, Bradford on Avon

Back ground

During the course of 2015 the Seniors Forum held a number of "Age Matters" events at which members were invited to express their concerns and issues that affect and have impact upon their everyday lives.

These events demonstrated unequivocally that there were major concerns with transport and ability to access areas of the Town in relative safety.

The Seniors Forum decided to devote a single event to the issues surrounding transport and accessibility.

In order to broaden its engagement with the wider community the Seniors Forum hosted the event in conjunction with the Bradford on Avon Area Board and the Bradford on Avon Town Council.

Approach

As many interested groups as possible from the Town were invited to attend and participate in the Forum.

Topics for discussion were identified from the previous feedback received from the Age Matters events.

Key note speakers were invited to address the Forum on subject of ongoing Public Transport Review

Inaugural showing of Disability Film demonstrating problems of access around Town for disabled people

Round table discussions on identified topics with a view to identifying main issues and building consensus on the issues that need addressing.

Attendance

Circa 100 people attended.

The following table demonstrates those groups who attended and actively participated

Members of the Area Board	Bradford on Avon Business
Members of Bradford on Avon Town Council	Preservation Trust
Wiltshire Police	Air Quality Alliance
Fire Brigade	White Stripe
Bradford on Avon Health Centre	20's Plenty
Bradford on Avon Link Scheme	Representatives of Wiltshire Council

A list of attendees has been compiled to enable subsequent feedback on progress to address issues identified

Topics

The following table demonstrates those topics that were identified for discussion along with the relevant facilitator.

Facilitators were briefed prior to the event to ensure consistency of approach.

Topic	Facilitator
Pedestrian Safety	Trevor Bedeman
Disability Access	Eamon McLelland
Air Quality	Peter Dunford
Traffic Congestion	Mike Roberts
School Travel / Walking	Sue Kershaw
River Crossings	Magnus McDonald
Public Passenger Transport	Horace Prickett
Parking	Tony Monks

Feedback on round table discussions was captured on flip chart paper and has been retained.

Summary of Main Findings

The table below identifies the main issues to emerge from the round table discussions.

Main Issues identified
Station Approach and Frome Road Area is in need of being made safer for users of all types and age
A lift is needed at station to allow disabled and elderly to access both platforms
Increase support for Lorry Watch to minimise HGV traffic
Almost unanimous support for one way system to potentially alleviate congestion and improve air quality
Lack of formal crossings on school routes through Town
Broad support for additional footbridge from Library car park to Lambs Yard area at narrowest point of river
Strong support for retaining Town Bus as well as 265 service linking Trowbridge – Bradford on Avon - Bath
Lack of adequate parking in station area and north of the river

It should be emphasized that these were the main issues which emerged and for which there was general agreement that these were the priority issues to be addressed.

There were however a variety of other issues raised and these are recorded in a separate issues list supplementary to this report.

Comment

The whole objective of the Forum was to identify the main issues around transport and accessibility in Bradford on Avon which need to be addressed.

The Forum was well attended by a good cross section of the Town and its representatives. Whilst the attendees do not in themselves provide a mandate for change they did provide a more than useful snapshot of the general views and concerns of residents.

The format succeeded in prioritising the issues and should be viewed with confidence as a platform for driving through positive change.

Next Steps

We should now press for resolution of the issues identified and prioritised

An Action Plan should be drawn up to identify how those issues should be addressed

Any Action Plan needs to be time framed and regularly reviewed to assess progress

Communications are vital to ensure that people know what is happening and ensure wide engagement

Identify any quick fixes to provide positive message and confidence that issues are being addressed.

SUPPLEMENTARY ISSUES LIST

TOPIC	ISSUE
Town Bridge	<ul style="list-style-type: none"> • Dangerous for pedestrians • Potentially damages economy • Discourages visitors • Anecdotal evidence of people being hit by wing mirrors
McKeever Bridge	<ul style="list-style-type: none"> • Gradient is quite steep. • Surface becomes dangerous in icy weather. • Access blocked when area floods
Additional footbridge	<ul style="list-style-type: none"> • Provide an alternative means of safely crossing river • Better access to businesses and residents in Kingston Mill area
Lorry Watch	<ul style="list-style-type: none"> • Too many HGVs crossing Town Bridge • Better support needed for Lorry Watch
Traffic Congestion	<ul style="list-style-type: none"> • Flow of traffic around Town potentially alleviated by a one way system • Long Term Bypass should be considered • Access for Emergency Vehicles
Disability Access	<ul style="list-style-type: none"> • Hazardous steps – consider highlighting • Potential improvements held back by conservation rules • Touch pad signage • Railway Station Area very hazardous • New build to take account of people with disability • Delivery / Construction traffic often leads to broken footpaths and obstruction
Parking	<ul style="list-style-type: none"> • Insufficient parking in Town • Potential cuts to bus provision will exacerbate problem • Station car park draws in commuters leaving little space for locals • Annual Tickets take up large portion of Station Car Park • Insufficient short term parking provision

	<ul style="list-style-type: none"> • On street parking in areas away from Town centre leading to clogging of those areas • Insufficient signage for canal car park • Lack of Park and Ride scheme • Lack of parking north of bridge • Lack of enforcement for illegal / inconsiderate parking
School Travel / Walking	<ul style="list-style-type: none"> • Narrow pavements • Lack of dropped kerbs • Traffic volume and speed • Lack of signage around Winsley Road / Bath Road area • No school crossing patrol at present • Moving vehicles mounting pavements on Ashley Road and Holt Road • Lack of pavements at junction of Springfield / Holt Road • No safe means of crossing at roundabout on Winsley Bypass • Wine Street / Winsley Road junction due to lack of crossing, speed and visibility • Train station area has no safe access routes for pedestrians • >50% of students and staff at secondary school live outside BOA • New Winsley Road crossing has some hazards e.g. bus stops on zebra crossing
Air Quality	<ul style="list-style-type: none"> • Some contaminants are not being measured e.g. carbon monoxide • Impact on road side café culture • Volume of traffic • Lack of parking on north side of Town • Concerns that a one way system would increase speed of traffic • Any proposed one way system needs to take account of impact on air quality • Secondary school on one side of Town and supermarket on other side leads to more through traffic
Pedestrian Safety	<ul style="list-style-type: none"> • Station Approach / Frome Road area seen as particularly hazardous

	<ul style="list-style-type: none">• Crossing Bath Road is hazardous for pedestrians of all ages• Excessive speed in some areas of Town• Need for better safety monitoring• Narrowness of Holt Road• Parking on pavements blocking access for pedestrians especially elderly and disabled• Budgens area unsafe when trying to cross road close to roundabout
--	--

Bradford on Avon Area Board - 9 March 2016

Disability Friendly Bradford on Avon: next steps

Bradford on Avon's challenges:

1. Historic architecture, listed properties
 - many buildings have steps up to entrance
 - narrow entrances
2. Condition of pedestrian routes
 - narrow pavements - proximity of traffic, wing mirrors
 - uneven pavements
 - lack of safe crossing points
 - poorly maintained road surfaces, especially at optimal crossing points
 - pinch points and obstacles
3. Train station
 - tortuous route to move from one platform to the other for anyone unable to manage steps. Important as the return journey puts people on the opposite platform.
4. Lack of information, even places with disabled facilities are not promoting them
5. Limited availability of poor signage to disabled toilet facilities

Solutions and ideas

A. Low cost, easy to implement:

- Awareness raising
 - For businesses - an audit of what they have in place and any ideas for improvement to their own space or around the town might be a good (and engaging) start
- Stickers - ensure all businesses that offer some disabled service use the existing identification options such as window stickers
- Staff training – to instil confidence when serving people who need a little extra and specialist help
- Interior layouts – for establishments that are already accessible
- Information
 - Use existing Council web sites to promote accessibility around the town, and improvements as they happen. Links to other useful sites.
 - articles in The Gudgeon and other publications
- Develop working relationships with groups meeting similar challenges – Disability groups, Seniors, young mums

B. Medium cost, needing a little more research, some investment:

- Intercoms or external press button request for assistance
- Click and collect shopping
- Mobile ramp/s and lockable storage
- Group buying discounts
 - equipment possibly 0% VAT
- Develop a map of accessibility

C. Higher cost, needs research, possibly negotiation, investment

- Dedicated web site
- Moving around the town:
 - level pavements
 - dropped curbs
 - road surfaces
 - crossings
 - traffic flow
 - Lifts at station
- Other solutions, e.g. that take up less space than ramps when giving access to buildings
- An App identifying safe routes, facilities etc – possibly work with another developing similar e.g. Town Council, history group

Delivery and Budget

It will be important that the Area Board and the Town Council allocate public resources in 2016/17 to move this initiative forward (and probably in 2017/18 too).

If BoA Business is seen to be supporting its implementation this should act as an incentive to local businesses and potential sponsors to invest in the project.

Sources of external grants, such as LEADER and charitable trusts, should also be investigated.

Links with parallel projects and budgets for dementia awareness infrastructure, tourism signage, safe crossings, pavement improvements, toilet refurbishments etc. should be made.

In Year 1 a small number of “demonstrator projects” should be identified with willing business owners. Some low-cost actions should be investigated such as a wi-fi bells, a sticker scheme and “click and collect” service. A publicity campaign will be important.

Should sufficient pooled resources be identified, a co-ordinator has been identified with the expertise to help take this work forward.

Report by Sue Thomson and Peter Dunford



Bradford on Avon
WALKERS ARE WELCOME



“Bradford on Avon Walking Wheel”



‘Bradford on Avon Walking Wheel’



Lead organisations’ aims



- be an attractive destination for walkers
- offer local people and visitors excellent walking opportunities within their areas
- ensure that footpaths and facilities for walkers are maintained, improved and well signposted
- contribute to local tourism
- promote the health benefits of walking and increase participation
- encourage the use of public transport



A charity whose goal is to protect the ability of people to enjoy the sense of freedom and benefits that come from being outdoors on foot.

An association of people and groups who come together to both enjoy walking and other outdoor pursuits and also to ensure that we protect and expand the infrastructure and places people go walking.

‘Bradford on Avon Walking Wheel’

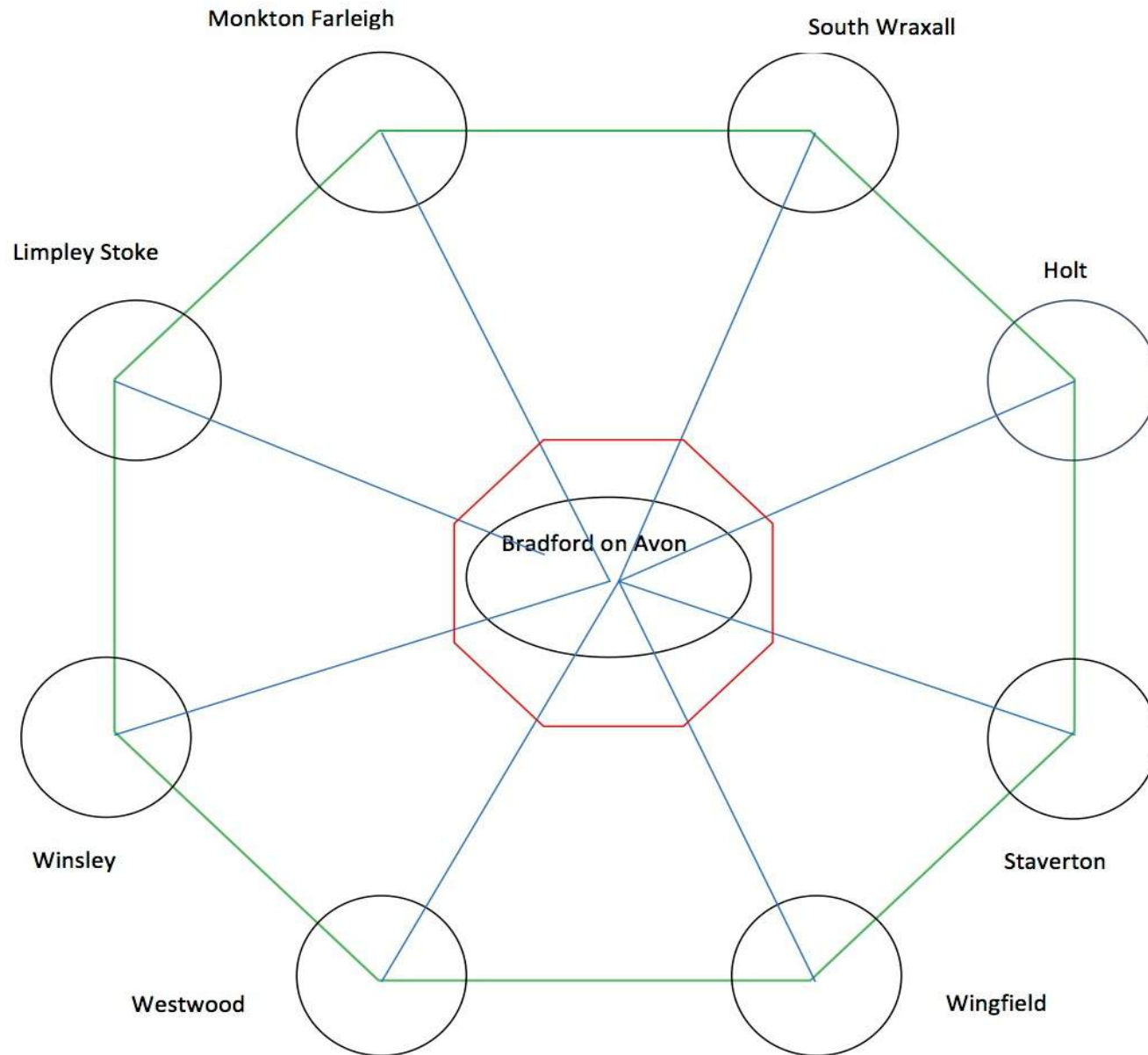
PURPOSE

Celebrate the wealth of walking opportunities in the BoA area

- **develop a web of safe, well signposted footpaths inter-connecting Bradford on Avon & the satellite villages.**
- **create an attraction that will draw people to the area – links with current tourism drive**
- **bring benefits to the local economy & people’s health & lifestyle.**
- **produce easy to follow waymarked routes, with mapping & instructions.**

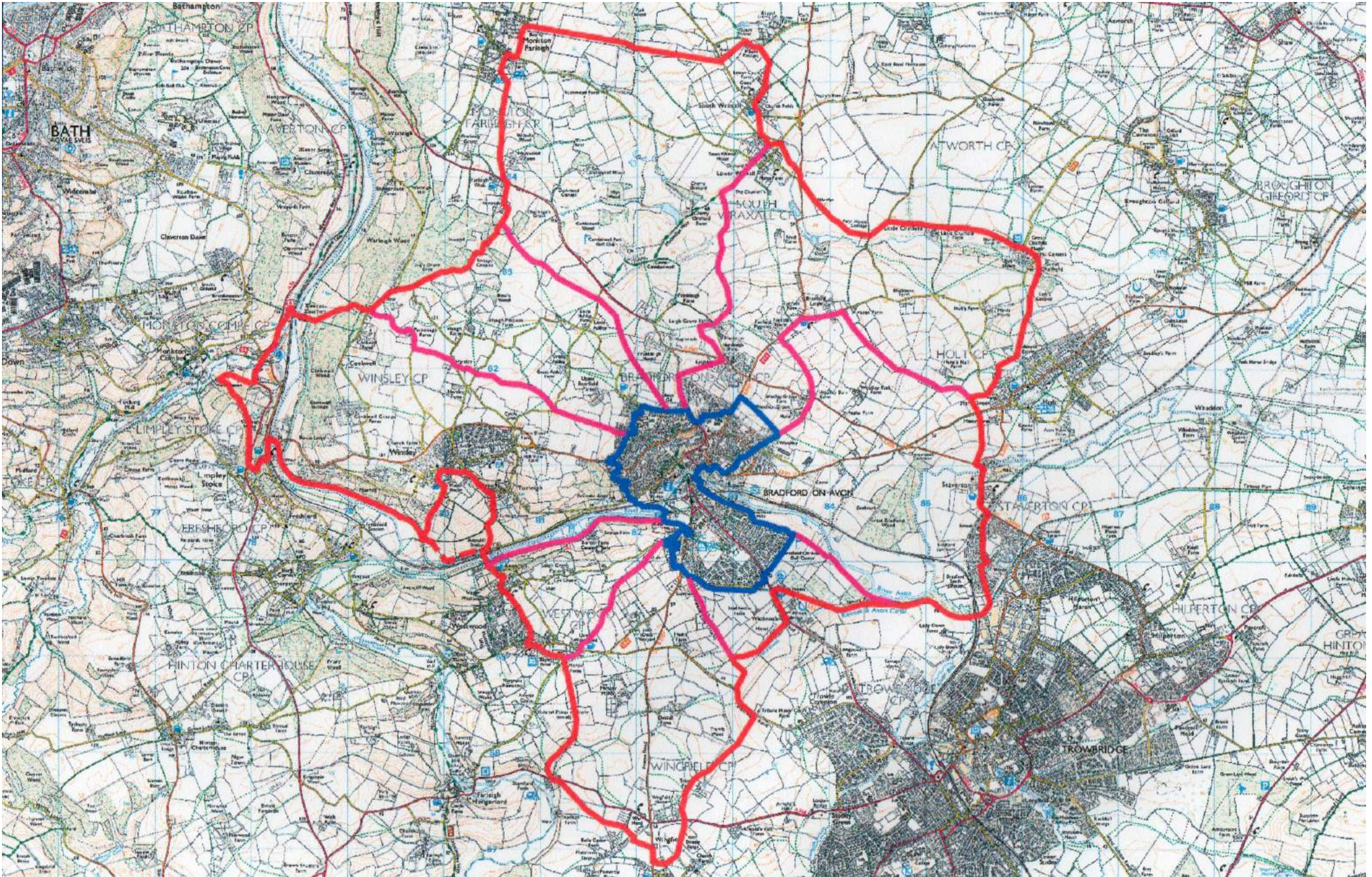


'Bradford on Avon Walking Wheel'



'Bradford on Avon Walking Wheel'

Proposed routes (subject to tweaking)



'Bradford on Avon Walking Wheel' - Yellow Publications' first pass



‘Bradford on Avon Walking Wheel’

Waymarkers – probable designs (subject to tweaking)



‘Bradford on Avon Walking Wheel’

A phased approach

PHASE 1:

a) Create map of the outer (21m.) & inner (6m.) routes + spokes (28m.). 55 miles in total.

By April 2016

Indicative costs

£70

PHASE 2:

Design & install signage discs.

By August 2016

(in time for launch at Annual BoA

Walking Festival)

£3,070

£1570 for waymarkers

£1500 labour ‘in kind’

PHASE 3:

Route improvements – access gates, potential new paths, bridges, etc.

Ongoing

£ unknown as yet

Celebrating the Olympics

Your guide to...

Wiltshire's Big Pledge – The Road to Rio Challenge

What will you achieve to
make a difference to your
health and wellbeing in
2016?





Getting involved – 2016 Rio Olympics and Paralympics

As the 2016 Rio Olympics and Paralympics are taking place this year, Wiltshire will be hosting a variety of events and activities to celebrate. Carnival themed entertainment along with vibrant colours and Brazilian music will be part of the excitement in encouraging people from all ages to become more active and to get involved in the Olympic year celebrations.

So, what's happening?

- The Big Pledge 'Road to Rio' – as you will have read so far, The Big Pledge for 2016 is all about getting active and facing your sporting challenges so get involved and give it a go!
- School games will be held across the county, get in touch with your local school to find out what they are doing. Individual and multiple schools put on outdoor athletic events for their children, interschool games allow children from different schools to compete against each other, meet new people and have fun doing sport.
- Cycle Wiltshire will once again take place in Salisbury on 7 and 8 May and the event village will have a Rio theme for this year. Why not take on your own sporting challenge and participate in the sportive or enjoy a great family fun day out at the event?
Visit www.cyclewiltshire.org.uk.
- Wiltshire Council will once again be handing out grants to up and coming athletes in the county through Funding Future Olympians and Paralympians grant scheme. The annual fundraising dinner will take place in March, could you donate a raffle or auction prize for this fantastic cause? Contact events@wiltshire.gov.uk if you would like to contribute and item or experience.
- The annual Wiltshire Sports Awards will take place in October and will be an opportunity to showcase Wiltshire athletes who have competed in Rio.

2016 will be an opportunity to bring together communities from across Wiltshire and celebrate the success of our Olympians and Paralympians.

Wiltshire's athletes to look out for

Ed McKeever – Sprint Kayak – Bradford on Avon

Who can forget Ed McKeever's Gold medal win in London 2012 in the K1 200m and his homecoming celebration in Bradford on Avon! He now has his sights set on retaining his Olympic title in Rio!

Stephanie Millward – Swimming – Corsham

Corsham's Stephanie Millward medal haul at the London 2012 Paralympics included four silver medals and a bronze. The following years she has won multiple medals at World and European Championships. In September 2015 Stephanie was selected for the Rio and is now in training with her sights set on more Paralympic glory!

Aaron Moores – Swimming

Trowbridge's Aaron Moore had an international breakthrough game at the London 2012 Paralympics when he won a silver medal in the men's S14 100m Backstroke. Two bronze medals at the World and European Championships. He is now focussed on gaining team selection for Rio.

Laura Halford – Rhythmic Gymnastics

Cricklade's Laura Halford is the reigning British Rhythmic Gymnastics champion and three medals at the 2014 Commonwealth Games in Glasgow. Laura was named 2014 Wiltshire Sports Personality of the Year and also won the Carwyn Jones Welsh Young Sportswoman of the Year.

Tom Reed – Judo

Tom Reed from Devizes won a silver medal in the Men's 81kg at the 2014 Commonwealth Games in Glasgow. He recently had to undergo surgery on his elbow but is now back in training and will be hoping to gain selection for Rio.

Danny Talbot – Athletics

Trowbridge's Danny Talbot is a 200m sprinter who won a bronze at the 2012 European Championships. He became British 200m Champion in 2014 and won 4 x100m gold at the 2014 European Championships and 4 x 100m at the Commonwealth Games. He will be aiming to gain team selection for the Rio Olympics.

Hannah Brown – Sprint Kayak

2015 saw Melksham's Hannah Brown's best season yet racing K1 and K2. She was named 2015 Wiltshire Sports Personality of the Year. Hannah is a member of the GB Canoeing senior team who are aiming to compete at the Rio Olympics in 2016.



Philip Marsh – Fencing

Bradford on Avon's Phillip Marsh exploded on the international scene in 2011 when he won the World Junior Championships, the first British fencer to do so in 30 years! Having taken a year out in 2013 to train at the elite fencing academy in Paris, Philip is now ranked British Number 2 and will be aiming for Rio selection this year.

Lauren Booth – Cycling

Chippenham's Lauren Booth is one to watch for the future in the world of para cycling. She is a member of the British Cycling GB Academy. Her successes include a National Champion title and British and World records. At only 15 years old she is too young to compete in Rio this year so has her sights firmly set on Tokyo in 2020.

Dan Bethell – Badminton

Chippenham's Dan Bethell is the British and World Number 1 in singles and is a member of the Elite England Squad. In 2014 he became European Champion in the Men's singles. Last year's announcement that para badminton will be included at the Tokyo Paralympics Dan is now focused long-term on 2020.



Many of Wiltshire's future Olympians and Paralympians have benefitted from the Funding Future Olympians and Paralympians programme. To see the full list of athletes who have benefitted from this fantastic grant scheme visit:

www.fundingfutureolympians.org.uk/grant-recipients

To follow our athletes progress follow **@Sport4Wiltshire** on Twitter.

Wiltshire's Big Pledge is now in its third year and is your opportunity to get active and achieve something big!

The Big Pledge returns in 2016 and with it being an Olympic year, you can really make a difference to your health and wellbeing. You can take part on your own, as part of a team and as part of your community. Wiltshire's Big Pledge is a campaign endorsed by Wiltshire Council's Legacy Board and is part of the ongoing work to encourage thriving local communities and for Wiltshire residents to lead healthier and more active lives.



The aim of the campaign is to:

- make a difference to an individual's health and wellbeing
- make a difference to the health and wellbeing of the local community.

In this guide you will find:

- Getting started and how to sign up for Wiltshire's Big Pledge
- Details of Wiltshire's Big Pledge Road to Rio Challenges
 - Sprint Row Championships
- How to get your community involved
 - Checklist



Keep in touch by social media

 @BigPledge
 www.Facebook.com/WiltshireBigPledge

Getting started

To make it easier for you to take part in the Big Pledge, we have produced this simple guide to help you and your community get involved.

As it is an Olympic year the theme for this year's Big Pledge is The Road to Rio and you can participate from 4 June – 29 July 2016.

You can enter as an individual or team from 2 May 2016, and this year all 18 community areas in Wiltshire will be in competition to see who can travel the furthest and make it all the way to Rio de Janeiro.

When signing up you will be asked to enter your postcode, this will allow all your activity to be added to your community and contribute towards your community area's distance. As the challenges progress you will be able to see how your area is doing.

For all challenges there is a gold, silver and bronze level – so why not test yourself and go for gold in 2016.





Sign up for The Big Pledge Road to Rio challenge

Registration will open in 2 May 2016 and you can enter online by visiting www.wiltshire.gov.uk/bigpledge.

Individuals can sign up for the Running, Cycling, Swimming, Walking, Junior Sports and Ultimate Sports Challenges to take part in a virtual journey to Rio.

Teams can sign up for the Road to Rio challenge to complete the actual distance between London and Rio by running, swimming, cycling or walking as a combined entry.

Whether you decide to take part as an individual or as part of a team you may wish to use the Big Pledge as an opportunity to raise money for a local charity or cause. This can help give you the extra motivation and support you need to help reach your goal.

Once you have entered, you can continue to log your activity online to keep a record of your individual achievement. To measure your distance you can use a health/activity tracker or download a free smartphone app. As you add your distance you will be able to see how far you have travelled, along with how far your community has gone. You will also be able to see how your community is getting on compared to the other 17 areas.



The Big Pledge challenge

The challenges and distances are:

Challenges	Bronze distance	Silver distance	Gold distance
Road to Rio (club, business, community group or school – Team only)	3000km	6000km	9281km
Running Challenge (Individuals)	50km	120km	200km
Cycling Challenge (Individuals)	200km	400km	600km
Swimming Challenge (Individuals)	20km	35km	50km
Walking Challenge* (Individuals)	100km	200km	300km
Junior Sports Challenge* (Individuals 15 years and under)	80km	150km	200km
Ultimate Sports Challenge* (Individuals or Team)	800km	1500km	2016km

*The first 1,000 people to register for this challenge you will receive a free pedometer.

All participants that achieve at least the bronze level of their challenge will receive a certificate and will be invited to a presentation event. All of the individual participants who achieve the gold distance in their challenge will be entered in to a prize draw for the chance to win a year's free leisure centre membership. The community that travels the furthest will win an award – could your community be awarded the Big Pledge Community Challenge Winners in 2016?

The 20 stages of the Big Pledge journey starts in London and stops at a number of previous Olympic host cities including Athens, Paris, Munich, Moscow, Beijing, Sydney, Los Angeles and finishes at the 2016 host city Rio de Janeiro



Road to Rio sprint row championships

In addition to the Big Pledge challenge you can also take part in a Sprint Row Championships at your local leisure centre. This is a knock out competition over 2016 metres with heats, semis and a final.

Date	Stage	Venue
4–26 June 2016	Heats	Individual leisure centres
9–10 July 2016	Semis	Springfield, Corsham (North), Five Rivers, Salisbury (South) and Calne (East) Castle Place (West)
23 July 2016	Final	Atrium, County Hall (TBC)

For more information on when the stages will take place at your local leisure centre and to enter visit www.wiltshire.gov.uk/bigpledge



How to get your community involved

Why not contact family, friends, colleagues and neighbours and encourage them to sign up to take part?

If you usually exercise on your own or at the gym, why not arrange a group activity to run, walk or cycle in the beautiful Wiltshire countryside as part of a group.

If you would prefer to join an existing club or group visit www.activewiltshire.org.uk and search for an activity taking place in your local area. This is a great way to socialise and meet new people whilst keeping active.



Checklist

<input type="checkbox"/>	Select your challenge and enter your challenge online
<input type="checkbox"/>	Get active and start your challenge
<input type="checkbox"/>	Upload your progress online
<input type="checkbox"/>	Get others involved – how is your community doing compared to the other community areas?
<input type="checkbox"/>	Complete your challenge
<input type="checkbox"/>	Attend award presentation evening
<input type="checkbox"/>	Feel proud for what you have achieved – well done!
<input type="checkbox"/>	See how else you can get involved and support the Olympics and Paralympics 2016







**A legacy
for Wiltshire**

A legacy for Wiltshire

2012 was a fabulous year for Great Britain; it was also a great year for Wiltshire. Our communities came together and celebrated the Queen's Diamond Jubilee, the Olympic Games and followed the Olympic Torch relay as it travelled through the county.

These events had a huge impact on our communities and the local economy. A Legacy Steering Board was established to make sure we built on the successful relationships that were developed and to ensure that a real legacy for the future was created with the following aims:

- **bringing communities together to deliver events and activities**
- **keeping the economy invigorated**
- **getting more people more active through sport and leisure**
- **increasing the access to arts and culture across the county.**

Bradford on Avon Area Board

CAPITAL Budget

Budget Code:

Area Board Budget	£39,175.00
Digital Literacy Budget	£1,500.00
Roll forward	£0.00
Awarded	£40,667
Balance :	£8.00

Projects no.	12
Projects value	£292,729
Leverage	£7.2

Project	Applicant	Project Cost	Amount Awarded	Award date	Payment date
New training bar and menss rings	West Wilts Esprit Gymnastics Club	£10,000.00	£1,000.00	13/05/2015	05/06/2015
Replacement windows and door	Bradford on Avon Bowls Club	£3,188.00	£1,594.00	13/05/2015	20/05/2015
Signing, barriers and banners	BOA Cycle Festival (2payments)	£4,000.00	£3,000.00	13/05/2015	20/05/2015
Memory café at Dog and Fox	BOA & Melksham Health Partnership	£1,000.00	£1,000.00	13/05/2015	23/06/2015
Parish Room Transformation	Westwood PCC	£150,000.00	£5,000.00	15/07/2015	09/12/2015
Culver Close Toilets	Bradford on Avon Preservation Trust	£1,900.00	£700.00	15/07/2015	01/09/2015
Equipment Update	Wiltshire Music Centre	£17,973.00	£4,973.00	15/07/2015	03/08/2015
CATG projects	Internal transfers	£7,000.00	£7,000.00	15/07/2015	00/00/15
Restoration of Iron Duke rubber calendering machine	Bradford on Avon Museum	£56,643.00	£3,400.00	16/09/2015	21/01/2016
Cllr Led - Tourism Development and Branding	Cllr MacDonald	£25,000.00	£5,000.00	16/09/2015	09/11/2015
The Accessible Business	Disabled friendly BOA	£6,000.00	£3,000.00	11/03/2015	09/04/2015
Repairs to the building	BOA Youth & Community Centre	£10,025.00	£5,000.00	11/03/2015	02/04/2015

Bradford on Avon Area Board, 9 March 2016

Budgets, priority areas, ring-fenced budget allocations, external funding

Budgets for 2016/17

These have not yet been confirmed formally but a 10% cut has been announced in base budgets and therefore estimates are as follows:

Community Grant Scheme	£35,256
Community Area Transport Group	£10,955
Local Youth Network	£10,283
Health and Wellbeing Sub Group	£ 6,000
Older Peoples' Champion/Seniors Forum	£ 1,000

Estimated Total: £ 63,494 in 2016/17

Priorities for 2015-2017

As identified by the Area Board in September 2015:

1. Tourism and Business
2. Air Quality and Public Health
3. Traffic and Transport
4. Health and Social Care
5. Positive Activities for Young People
6. Community Hub of public services

Ring-fenced budget allocations

In order to deliver on these expressed priorities it is proposed to ring-fence capital allocations from the Community Grant Scheme to the following areas of work:

Tourism infrastructure: £ 5,000 plus match funding

Business infrastructure: £ 5,000 plus match funding

Disability Friendly infrastructure: £ 5,000 plus match funding

Dementia Friendly infrastructure: £ 5,000 plus match funding

Air Quality and Public Health infrastructure: £5,000 plus match funding

Community engagement infrastructure: £5,000 plus match funding

Health and Wellbeing Centre (Community Hub) options report: £ 5,000

Volunteering/ time credits website and database: £ 1,000

External Funding

With growing pressures on shrinking budgets it will be important that funding is levered in from external sources.

This is already the norm within the CATG where a contribution of 50 % of costs is now required from town and parish councils.

For major investment schemes – such as tourism infrastructure development - the Swindon and Wiltshire Local Enterprise Partnership is a potential source.

For smaller projects contributions from the Vale Action LEADER programme, Section 106/ community infrastructure levy, town and parish councils, charitable grants and private sponsorship will be explored.

Peter Dunford
Community Engagement Manager

**AREA BOARD PROJECTS AND COUNCILLOR LED
INITIATIVES APPLICATION FORM 2016/2017**

Area Board Project

1. What is the Initiative?

Funding is to be withdrawn by Wiltshire Council for Avoncliff Car Park within the next few weeks. Those that use the car park regularly include tourists, visitors, local business employees, commuters, walkers, diners, service vehicles (e.g. for boats), clubs and groups using vehicles to transport disabled persons, party groups, runners and equipment such as cycles, canoes, fishing gear.

Consultation with stakeholders - including the Canal and River Trust, Great Western Railway and Westwood Parish Council and the Cross Guns pub - has failed to identify funds to lease the land from the private landowner.

2. Where is the initiative taking place?

Former Avoncliff Public Car Park (in Westwood Parish)

3. When will the initiative take place?

Following Wiltshire Council's ending of the lease agreement on 23 March 2016

4. What is the Community benefit/evidence of need/links to Community Plan/Community Issue?

It supports the objectives of the emerging Westwood Neighbourhood Plan by:

- retaining offstreet parking, thereby avoiding chaos
- protecting emergency access
- securing access for disabled children and adults
- supporting local tourism and business
- supporting the operation of Avoncliff Station
- securing positive environmental benefits

5. What is the desired outcome of this initiative?

To protect the economic viability and social fabric of the hamlet

A community-based solution seems the only way forward and the Area Board can play a role to pump-prime the establishment of a private car park in the hamlet.

6. Who will Project Manage this initiative?

Avoncliff Community Group

7. Costs/quotes/ match funding? (total cost £5k require 1 quote, total cost £5k-25k require 3 quotes)

The landlord is willing to consider a joint-funded solution to establish a privately owned and run car park.

Options for capital investment are being discussed with the Avoncliff Community Group. Investment is required to construct a wall on the western boundary of the car park and protective barriers on the northern and western boundaries of the car park. The wall is required because the prevailing wind sometimes blows down the existing fence on the western boundary. The barriers are required because the current fencing (on the northern and western boundaries) is frequently hit by cars and damaged to an extent that it is susceptible to blowing over in moderate/high winds. This has happened on three occasions in the past 18 months resulting in a danger to the public and a risk of damage to vehicles.

A full proposal with costings will be presented to the area board meeting.

8. Additional information

The closure of Avoncliff car park, would have the effect of disenfranchising the people of West Wiltshire regarding access to one of the most unusual and beautiful parts of the County, and have a major impact on the residents and businesses within Avoncliff. The community has outlined the resulting effects of the closure below:

1. No car park will cause chaos

There is not a single legitimate parking space for visitors on the south side of Avoncliff. This means visitors will be tempted to use residents' private driveways, park in passing places on the road (where ease of passage is already badly compromised by erosion of the verges), or park beyond the 'Residents Only' and 'Safety' signs.

Before the car park was instituted the hill was regularly blocked as cars parked in resident areas, on bends causing blockages and huge issues on sunny days and all school and summer holidays. Even with the car park on pleasant weekend, school holidays and bank holidays illegal and inconsiderate parking is common. Removal of the car park would increase this kind of inconsiderate parking and parking that will block the route into Avoncliff on a regular basis.

2. Blocking emergency assistance

This is a huge concern for the community. People, homes and businesses in Avoncliff will be at risk if emergency vehicles cannot gain access when routes are blocked by parked vehicles. This has happened on occasions before the car park was available, when access to the hamlet was completely blocked. On 8th February 2016, three Fire & Rescue vehicles were parked in Avoncliff car park attending an emergency. What will they do when the car park is closed? How does the Council plan to ensure the safety of residents?

http://m.wiltshiretimes.co.uk/news/14261384.Huge_tree_falls_onto_Avoncliff_barge_blocking_boats_in_both_directions/

3. No access for disabled children and adults

Currently the south side of Avoncliff is accessible to all. The car park allows a disabled person on their own or with their carer to park and get out of the car on the level and then easily get up onto the canal path to enjoy the countryside and fresh air. In the summer months it is not unusual to see mini-busses transporting groups of disabled children and adults.

Mini-buses park in the car park so that their passengers can enjoy the environment of Avoncliff. Does the Council wish to deny access to these groups? This does not seem to be in line with 'Disability Friendly Bradford-on-Avon' for which the Council has received considerable funding. There are very few places which are accessible to wheelchair users for them to enjoy the countryside and the fresh air.

4. Hitting tourism and businesses

Wiltshire Council's website states: '**Boosting Wiltshire's economy is one of the Council's key priorities**'. In Avoncliff there are three tourism-related businesses which contribute towards the local economy: the exceptionally busy Cross Guns pub, Rebel Angel and No 10 Tea Gardens.

Closure of the car park will restrict tourists visiting Avoncliff. Taking a conservative estimate of ten cars a day not visiting the area, this would mean over 3,500 cars a year unable to enjoy Avoncliff. This will have a major knock-on effect on those businesses in the hamlet. 3,500 less cars is a lot of lost trade.

Also, these businesses will still remain an attraction to visitors, but without a public car park some Avoncliff residents could lose their normal parking spaces if they leave them unoccupied (despite the 'Residents Only' signage).

Avoncliff and the Aquaduct, canal barges and local walks are also a tourist destination in their own right, even if there were no other businesses here. Tourists come here from far and wide as we are also within the Cotswolds and they come via car, train and on foot.

Summer months see hundreds of visitors on weekend days and school holidays. The car park is even advertised in Wiltshire Councils and Bradford on Avon's own tourist pamphlets and web sites. Visiting Avoncliff will become an unbearable pain for visitors arriving by car and for residents.

5. Effect on Avoncliff Station

As noted above there are many commuters that park in Avoncliff to catch the train to work in Bath, Bristol, Trowbridge, and further afield. Since the car park was created in the early 1990s passengers at Avoncliff Station, have risen from less than 8,000 a year to over 19,000 with many now using the car park and coming from Westwood in particular.

It has also been suggested that the Westwood bus service is to be reduced then these commuters will have to drive a longer distance – adding to the unsustainability of the car park closure. They will need to find an alternative route to work, and the environmental impact of this is noted in point 6 (below).

However, if just five commuter journeys a day (a very conservative number) cease as a result of the car park closure, this will result in a reduction of around 1300 train journeys a year. If you said that these commuters were all purchasing a return to Bath (the most local commuter trip - £6 return), this is £7800 in lost revenue.

6. Environmental Impact

Finally, Avoncliff car park is used by commuters and other travelers coming from Westwood and the surrounding area who use the railway station to access Bath, Bristol, Salisbury and the Coast. Has the Council considered that if commuters have nowhere to park they will probably drive to their destinations, which is undesirable in terms of adding to city congestion and pollution? This will become more of an issue if the bus service through Westwood is discontinued or reduced.

Due to the impacts (listed 1-6), the Avoncliff community feel that it would be essential to erect signs at the top of the lane advising that there is no public parking in Avoncliff (due to the withdrawal of Council Funds). It is hoped that the Council will reconsider its decision to close Avoncliff car park and look at ways of raising revenue to support this important local amenity as the negatives far outweigh the small cost of keeping this valuable community asset open.

If the Council decision is not reconsidered, the Avoncliff community, which is a very close and active one, will need to take further steps to raise awareness to this issue at a regional and national level.

AREA BOARD PROJECTS AND COUNCILLOR LED INITIATIVES APPLICATION FORM 2016/2017

Area Board Project

1. What is the Initiative?

Iron Duke Community Engagement

Community engagement through website, social media and Fringe Festival to engage Avon workers and their families in Bradford/ nearby towns and schools and young people in BoA in support of four projects:

- i) Sound and word workshops to explore factory sounds to produce a digitally-recorded piece of music
- ii) Community Film about the changing social and economic structure of Bradford on Avon following the demise of the Avon Rubber factory, based on inter-generational oral interviews
- iii) Creative arts interpretation of the health implications of lives lived in a polluted environment, from the Avon Rubber factory's notorious 'Black Hole' to the town's latter day traffic fumes
- iv) Resurrecting the Avon Rubber News newspaper to inform people about the progress of the Iron Duke restoration project and to tell them about ways in which they can get involved

2. Where is the initiative taking place?

Focused on Bradford on Avon with outreach to Melksham and Trowbridge

3. When will the initiative take place?

From March 2016 to March 2017

4. What is the Community benefit/evidence of need/links to Community Plan/Community Issue?

The Avon and its workers are fast becoming a forgotten part of the town's history.

This project will bring much needed community value to the act of returning the Iron Duke to the town, through the engagement of former Avon workers and their families, school children and young people in remembering the important industrial heritage of the town

We will be seeking matched funding from the Local Youth Network for delivering an online platform for a creative youth network with scope for fostering youth creativity across the community area

5. What is the desired outcome of this initiative?

The engagement of the community and the former Avon workers in events around the return of the Iron Duke to the town.

Education about the town's industrial heritage as part of efforts to promote local tourism development

6. Who will Project Manage this initiative?

Iron Duke Project Steering Group

7. Costs/quotes/ match funding? (total cost £5k require 1 quote, total cost £5k-25k require 3 quotes)

Database of Avon workers and their families, social media campaign inc. Facebook page, engagement of schools and young people, Avon Fringe festival £ 4,500

Grant Requested £ 3,000

Match funding: Local Youth Network £ 1,500 (and Heritage Lottery Fund £ 55,500)

8. Additional information

The first rubber rolling machine in Europe, known as the Iron Duke, will return to Bradford-on-Avon for the first time in nearly 50 years thanks to grants from the Heritage Lottery Fund and the Arts Council.

Bradford on Avon Museum has been awarded £55,500 by the Heritage Lottery Fund and £18,000 by the Arts Council's PRISM Fund to restore and display the machine which was central to the establishment of a rubber factory at Kingston Mill over 150 years ago.

Working with partners Bradford on Avon Preservation Trust and BoaCan (the Bradford on Avon Community Area Network), the Museum will also run a range of community activities exploring this vital part of the town's industrial heritage.

Wiltshire Council and Bradford on Avon Town Council are also contributing to the project, which is estimated to cost £97,000 in total.

Information about the machine and its significance will be on panels and on-line, there will be booklets and a series of public talks and volunteers will be involved, learning new skills by taking part in the restoration and interpretative work. Past workers at the rubber factory will be involved, as will school children researching what it was like to work in the industry and its significance.

Commenting on the award, Chris Dale, Treasurer of the Museum, said "We are delighted to receive these grants from the Heritage Lottery Fund and from the PRISM Fund. With our partners the Preservation Trust and BoaCan, we have been preparing this project for several years and it is wonderful to know that we now have the funds that will allow us to proceed."

Nerys Watts, Head of Heritage Lottery Fund South West, said: "Thanks to National Lottery players, Bradford on Avon Museum will now be able to restore the Iron Duke, the first rubber rolling machine in Europe and an important part of the rubber factory heritage of the Kingston Mill site in the South West."

THE IRON DUKE COMETH....

Can *you* help us to bring the old Duke home to Bradford on Avon?

So who (or what) is the Iron Duke you may well ask?

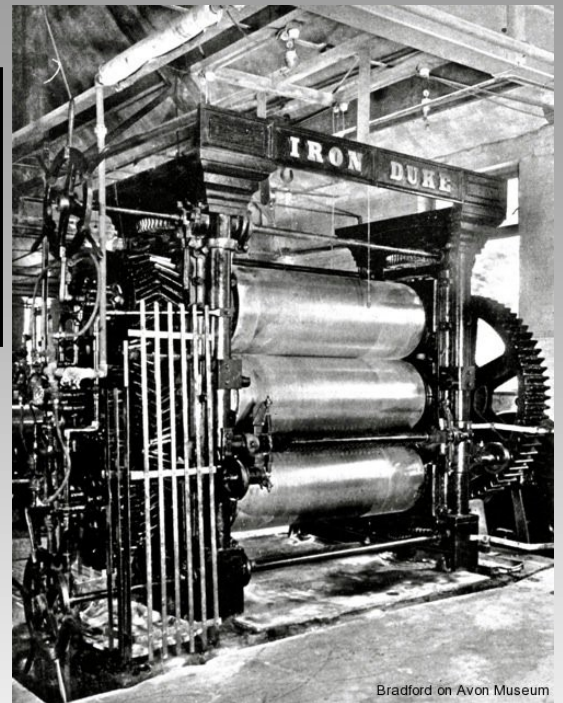
The Duke is an original 'resident' of Bradford and a genuine piece of the town's history.

He's a large (16 tons) rolling machine that worked in the Avon Rubber Company factory at Kingston Mills from 1849 to 1973. After closure of the factory, it has been in safe storage with the Bristol Museum, while we worked for its restoration, return and display.

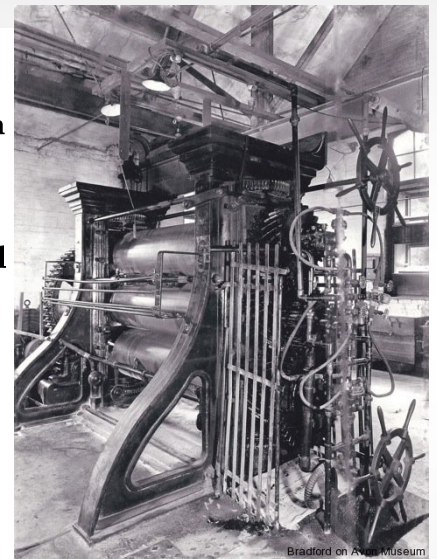
So what?

Well the Duke has national significance no less as Stephen Moulton (great grandfather of the late Dr Alex Moulton)

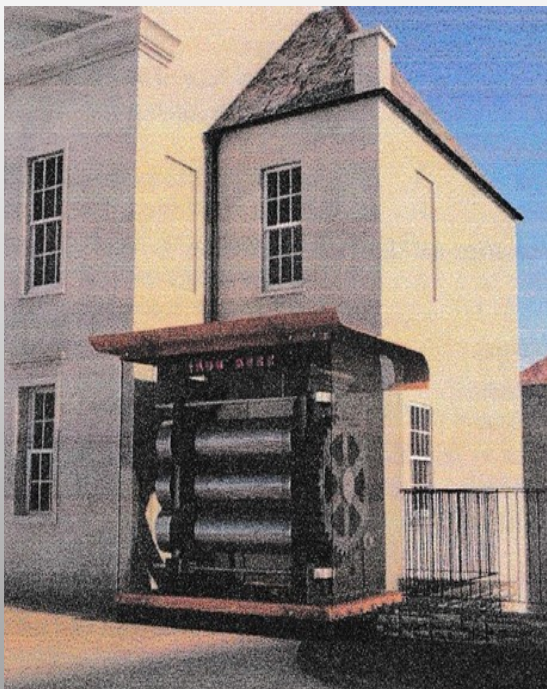
- **founded the entire UK rubber industry HERE in our town. He chose Bradford for its available water power and**
- **buildings, the (by then redundant) woollen mills.**
- **The 'Iron Duke' was installed in Bradford as the FIRST machine of its type in Europe to meld rubber and cotton fabric together to make a waterproof material (based on a design by Charles Goodyear in the USA). The Duke therefore puts Bradford firmly on Britain's industrial map.**



Bradford on Avon Museum



Bradford on Avon Museum

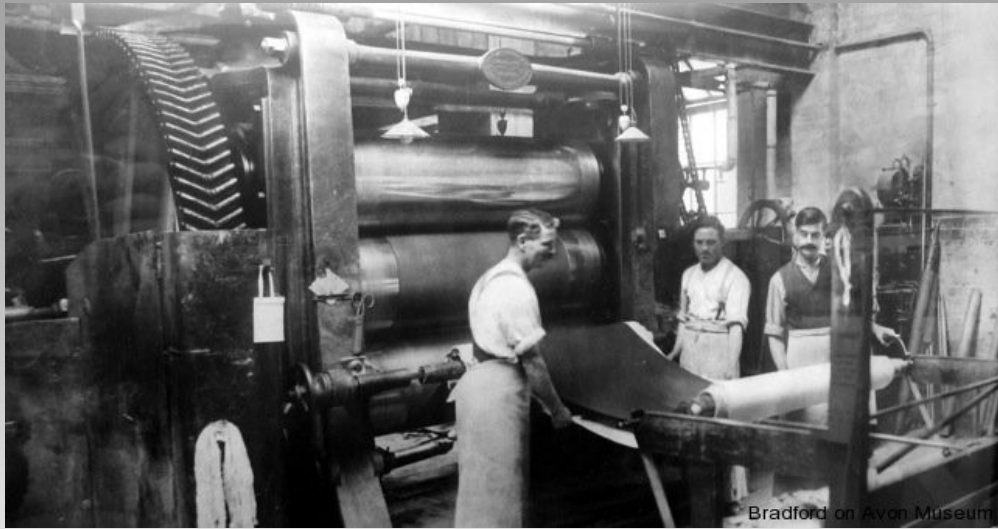


How close are we to bringing it back to Bradford?

Through a partnership between the town's Museum, Preservation Trust and Community Area Network, much has already been achieved and the project is about to start. A site is available in Kingston Road, with planning permission.

The restoration, transportation and a display enclosure for protection from the elements have all been planned, costed and designed.

In January 2016 substantial funding was awarded: £55,500 by the Heritage Lottery Fund, £18,000 from the Arts Council PRISM fund, and £3,400 from the Area Board, towards estimated project costs of £97,000.



So it's not just a big lump of metal?

Bringing it back is only the start. The important part is what this will contribute to capturing and interpreting a major part of our town's industrial history, for residents and visitors, now and in the future.

About a quarter of the project costs are to provide a wide programme of events, documents and learning materials - and to facilitate the involvement of volunteers, young and old, in this process.

How will the project capture what working in the 'Black Hole' was really like? And how will young people be involved?

Former employees at the Avon are already participating in recording what working life was like at the Avon (known locally as the 'black hole'). St Laurence school students will take part, working with the Wiltshire Music Centre. These partners will produce a community film, new editions of the Avon Newspaper, and other musical and dramatic work to understand the environmental, social and economic impact of rubber production in Bradford.

Display boards, leaflets and booklets about the Iron Duke will be designed and, with improved signage, can form the centrepiece of a visitors' trail around the town.

So, how can you help?

You now have a chance to be a part of this huge historical project!

All donations, big and small are very welcome and can be sent via the enclosed Gift Aid slip.

If you are able to volunteer and assist with events, practical work including landscaping of the site, or you yourself have a personal connection with the Avon and would like to contribute, please contact:

Mr Chris Dale, Museum Treasurer at chris@cdale99.fsnet.co.uk

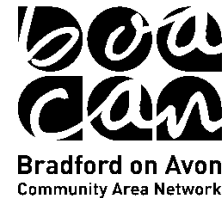
Thank you in advance for your support.



Supported using public funding by
**ARTS COUNCIL
ENGLAND**



**Bradford on Avon
Preservation Trust**
Conserving and promoting our heritage



PRESS NOTICE, 24 February 2016

Iron Duke project wins Heritage Lottery Fund and PRISM Fund support

The first rubber rolling machine in Europe, known as the Iron Duke, will return to Bradford-on-Avon for the first time in nearly 50 years thanks to grants from the Heritage Lottery Fund and the Arts Council.

Bradford on Avon Museum has been awarded £55,500 by the Heritage Lottery Fund and £18,000 by the Arts Council's PRISM Fund to restore and display the machine which was central to the establishment of a rubber factory at Kingston Mill over 150 years ago.

Working with partners Bradford on Avon Preservation Trust and BoaCan (the Bradford on Avon Community Area Network), the Museum will also run a range of community activities exploring this vital part of the town's industrial heritage.

Wiltshire Council and Bradford on Avon Town Council are also contributing to the project, which is estimated to cost £97,000 in total.

Information about the machine and its significance will be on panels and on-line, there will be booklets and a series of public talks and volunteers will be involved, learning new skills by taking part in the restoration and interpretative work. Past workers at the rubber factory will be involved, as will school children researching what it was like to work in the industry and its significance.

Commenting on the award, Chris Dale, Treasurer of the Museum, said "We are delighted to receive these grants from the Heritage Lottery Fund and from the PRISM Fund. With our partners the Preservation Trust and BoaCan, we have been preparing this project for several years and it is wonderful to know that we now have the funds that will allow us to proceed."

Nerys Watts, Head of Heritage Lottery Fund South West, said: "Thanks to National Lottery players, Bradford on Avon Museum will now be able to restore the Iron Duke, the first rubber rolling machine in Europe and an important part of the rubber factory heritage of the Kingston Mill site in the South West."

NOTES TO EDITORS

About Bradford on Avon Museum:

The Museum Society was incorporated as a charity in 1987 and provides a museum, which is free to visit, at the town's library. It also supports local activities and events, such as community digs and groups researching local archaeology and oral history.

www.bradfordonavonmuseum.co.uk

About the Bradford on Avon Preservation Trust:

Established in 1964, the Preservation Trust is a charity which campaigns for and helps to restore buildings and artefacts of architectural and historical significance in Bradford on Avon, to national award-winning standards. It undertakes environmental projects and maintains a keen interest in planning issues. www.bradfordheritage.co.uk

About BoaCan:

BoaCan is an independent network of individuals, groups and organisations, providing 'a local voice for local people'. Working with Wiltshire Council, the Town Council, and other key community groups, it fosters a co-operative, project-based approach, with minimum fuss and bureaucracy. Since its inception in 2009, it has partnered on the delivery of the Olympic Torch Celebrations, the development of Made in Bradford in Avon, the formation of the local Air Quality Alliance, the annual Retail Survey, the founding of The Hub@BA15, the Disability & Access initiative, and several other significant contributions to community wellbeing and development. BoaCan is a network which is open to all.

About the PRISM Fund:

The Preservation of Industrial and Scientific Material (PRISM) Fund awards grants towards the costs of acquisition and conservation of items or collections which are important in the history and development of science, technology, industry, and related fields. www.artscouncil.org.uk

About the Heritage Lottery Fund

Heritage Lottery Fund - Thanks to National Lottery players, we invest money to help people across the UK explore, enjoy and protect the heritage they care about - from the archaeology under our feet to the historic parks and buildings we love, from precious memories and collections to rare wildlife.

www.hlf.org.uk@heritagelottery

Further information:

For further information, images and interviews please contact Chris Dale (Treasurer, Bradford on Avon Museum) on 01225 862198 or David Moss (Chairman, Bradford on Avon Preservation Trust) on 01225 863946.

Heritage Lottery Fund: Tom Williams, Communications Manager, 020 7591 6056,
Tom.Williams@hlf.org.uk

Iron Duke community engagement projects

There will be four community projects exploring the town's Avon Rubber heritage through a variety of media. These will be:

1. Sound and word workshops to explore factory sounds (imagined and anecdotal) to produce a digitally-recorded piece of music.

There would be a set of six two-hour workshops at the Wiltshire Music Centre involving 5-8 Year 10 and 12 students in the 'dedicated musicians' group at the town's secondary school, St Laurence, followed by a public performance. The workshops would have input from a music teacher, two professional musicians, a sound technician and a poet/writer, who would encourage the students to explore the soundscape of the factory (including the Iron Duke) in music and word formats. The first workshop would involve 6-10 volunteers drawn from the former Avon Rubber workers community, who would talk to, and be questioned by, the students, about the day-to-day working sounds in the factory: machinery, voices etc. The second would be a workshop around those sounds with a music teacher, and the third would feature two professional musicians (there is support in principle from members of The Orchestra of the Age of Enlightenment) who would give the students the opportunity to hear different sounds, eg clarinet and violin, to see how they can interact with each other. Working to the students' direction, they would record sounds for use in a digital production which would give an interpretation of factory noise. A writer would work with the students in the fourth workshop to add in a textured overlay of words echoing those sounds. In the fifth workshop, the musicians would return to explore live music elements (played by the students and/or the professional musicians) to go on top of the digitally-recorded piece during the performance, and a sixth session would draw together all the elements – digital and live music and words – ready for the performance at the Wiltshire Music Centre. The former Avon Rubber workers would be invited to the final performance.

The anticipated outcomes of this project would include students interacting with (older) members of their own community, perhaps for the first time (and vice versa), learning about the town's rubber-making heritage from first-hand accounts, and exploring ways to communicate that knowledge with the wider community. They would learn about the production and recording of sounds to produce a musical score, gain first-hand experience of working with professional musicians, a sound technician and writer; and have the opportunity to perform live as part of a professionally-produced project. They would have developed project management skills, and will think differently about their town's place in the industrial development of the country – and about the people in their town who were part of that work. The former Avon Rubber workers will have the satisfaction of passing on details of their working experiences to others, they will have been listened to with interest and will feel that they are making a contribution to the perception of the former factory among young people.

The activities would take place between September and December 2016, so that they fall within one school term, and with a view to spreading the flow of community engagement projects through the year. This would allow for a second wave of interest in, and focus on, the Iron Duke/Avon Rubber project in the town.

Costings: The music teacher would incorporate some of the workshops into school time, and would volunteer out-of-school time for the other sessions, so no costs are involved. Two musicians for two days: £900 (they would work together, so

preparation time is shared); One writer for two days: £700; One sound technician for six days: £2,100. Transport to get former Avon workers to and from the Wiltshire Music Centre for the first workshop: £50. Total: £3,750.

2. Community Film about the changing social and economic structure of Bradford on Avon following the demise of the Avon Rubber factory, based on inter-generational oral interviews

This project would feature a series of workshops with a film company to produce a short community film about the changing face of Bradford on Avon in light of the loss of the Avon Rubber factory. This would involve 6-10 children/grandchildren of former Avon Rubber workers interviewing up to 20 relatives/family friends/community contacts about their memories of work at the factory, and the older generations asking the younger ones about their feelings on the breakdown of the Avon Rubber community, the broken continuity of employment with the demise of the factory, and employment opportunities generally within the modern-day town.

The film company (two people) would deliver basic film-making workshops, to include tuition on storyboarding, sound recording, filming subjects and interviewing skills. Decision-making on points such as who and where to film (for example, in the home, re-tracing steps in the journey to work etc) would be a team effort. The film company would produce a rough edit, then get input from the group towards creating the final film. If particular members of the group have specific talents, they might be involved further, for example if they are musical, they might help produce the soundtrack.

As the interviewing/oral history element of this will also create new archival material, the project would involve at least one member of Bradford on Avon Museum's oral history group (they have expressed interest in participating, and have good contacts among the former Avon Rubber community).

The project would include working with disengaged youth, and would draw out the skills of young people and embed them into the project in an organic approach. The project would bring together several generations who don't necessarily have contact with each other in everyday life, who would together dig through generational strata to find out about life in the town at different periods in time, with the Avon Rubber factory as the starting point for that exploration. This would encourage soft skills among the young people; they will learn interviewing techniques, and experience working as a team – skills they can take forward into their working lives. They would also benefit from an enhanced sense of 'belonging' within their community. Participants would also learn about the process of making a film, how to use recording equipment etc. The older and younger generations would benefit from a greater understanding of, and insight into, each other's lives, problems and viewpoints. Both would have the opportunity to spread those elements to a wider audience through the medium of film, and the former Avon workers will be able to preserve for future generations memories of their working lives and of the town's industrial heritage. The older generation would have the opportunity for increased social interaction, and to encourage others to get involved. Both generations would benefit from an increased sense of purpose and the feeling of satisfaction in having made a contribution to heritage and to the town. The involvement of the young people in the project would raise their awareness of other local heritage sites – and

to consider their possible significance – in the town and beyond. They would feel a greater sense of belonging to ‘their community’.

The workshops would take place between March and July 2016, so that the film produced could be shown at the Bradford on Avon Fringe Festival 2016, in the Vaults, Lamb Yard, Bradford on Avon.

Costings: Film company - £5,000 project fee. The oral history group input will be voluntary, so no costs involved.

3. Creative arts interpretation of the health implications of lives lived in a polluted environment, from the Avon Rubber factory’s notorious ‘Black Hole’ to the town’s latter day traffic fumes.

This project would use the strong, edgy feel of performance poetry as a creative platform for young people to make serious comment about health issues connected with employment and life in an industrialised society. The starting point will be an existing poem written by Merv Grist about the Avon Rubber factory’s ‘Black Hole’, a notoriously dirty, toxic work area from which workers emerged covered in black dust from the rubber. The students would conduct research into the chemicals used in the facility, including gathering first-hand accounts from 8-10 past workers about what it was like to go into the ‘Black Hole’, visiting the archives at the Wiltshire and Swindon History Centre for Census data, and consulting the existing Avon Rubber factory in Melksham. The students would relate this to research into toxins they might be exposed to in their own lives, including fumes from traffic passing through the town (a Bradford on Avon Street was named in 2010 as the worst in the county for air pollution by a Wiltshire Council report).

Using the students’ research, a performance poet would work with them to produce informative pieces of creative performance poetry. The aims of the project are for all participants to develop an understanding of the environmental, social, cultural and economic impact of the production of rubber in their local community, and to see that in the wider context of pollution in a modern world. The project would enhance the students’ research techniques, and the performance element would boost both their confidence and their CVs. They would be taught the skills to communicate their knowledge to the community in a creative environment through the medium of performance poetry/spoken word, and the local community will thereby gain knowledge about the significance of the Avon Rubber factory in the town, and an appreciation of the Iron Duke as a significant representation of the community’s history. There will be a benefit to the former Avon Rubber workers in that they will be given the opportunity to be heard, and to be involved in a proactive exploration and recording of what it was like to work in the factory – with the result that they will have engaged, perhaps for the first time, in a community heritage project.

The aim would be to produce a performance with an overall running time of 30-40 minutes. The workshops would involve 10-15 students from the town’s secondary School, St Laurence, and would take place between March and July 2016. The piece would be performed during the Bradford on Avon Fringe Festival in July 2016, which has an established platform and audience for poetry.

Costings: Six two-hour workshops plus preparation time and time spent editing, researching and preparing for the festival by a professional poetry performance tutor:

£2,100. Transporting students to and from the Wiltshire and Swindon History Centre (one trip): £150. Transporting former Avon Rubber workers to talk to the students: £50. Total cost: £2,300.

4. This project would resurrect the *Avon Rubber News* newspaper to inform people about the progress of the Iron Duke restoration project and to tell them about ways in which they can get involved.

The project would involve 12-15 St Laurence School students in a series of visits to the school by a journalist/sub-editor, to help students research, write, lay out and publish a new incarnation of the former *Avon Rubber News*, which formerly acted as a newsletter among the factory's workers. The project would incorporate a visit to a newspaper/magazine to see this process happening on an established publication.

The students would be encouraged to interact with all those involved in the project, including those undertaking the Iron Duke restoration work, and 'officials' including representatives from the Bradford on Avon Museum, the Town Council, plus the former Avon Rubber workers. They would be guided through the various stages of production, including interviewing techniques and recording strategies; photography for publication; writing for a specific audience and to a specific length; and layout and editing skills. The project would include a visit to see the Iron Duke restoration process in progress in Bristol with the opportunity to speak to those involved in the work, and a visit to a local newspaper/magazine to get a feel for how publications are put together and to give the opportunity for questions. The Bristol-based *Western Daily Press* is particularly keen on community-based stories, would be interested in the return of the Iron Duke story, and would be an ideal newspaper to bring on board this project.

The first issue of the new *Avon Rubber News* would also report on the community engagement projects underway as detailed in this bid.

The direct outcome of this project for the students would be that they would learn valuable skills, including how to research material for publication: to consider what information is available, how to obtain it, which parts to disseminate, and how to do that effectively. Students would also learn about the Iron Duke and the restoration work first hand, giving them a sense of involvement in the project, and they would find out about the significance and heritage of the former Avon Rubber factory in the town.

Those people interviewed, across all levels of the project (around 20 in total), would have a sense of the acknowledgement of their involvement, both during the interviewing process and on seeing the publication, and would be able to share that publication with a wider audience to spread the word about the work being done. The newspaper would be distributed via various channels (the museum, library, Tourist Information Office, school etc) so the community at large would find out about the project and identify with the sense of heritage in the town. They would also find out how they could get involved themselves.

There is already funding in place (£1,500 from the Local Youth Network – a Wiltshire Council scheme) to be used in activities for young people aged 13-19, which would cover a small, practitioner-led project prior to the rolling out of the newspaper. An effective use of this resource, which would feed into the *Avon Rubber News* project,

would be the setting up of an Iron Duke Facebook page to get the promotion of the project underway as early as possible: perhaps in January 2016.

The work on the newspaper would follow on naturally from that on-line presence in March 2016, with a view to the first issue being published in April. Subsequent issues would be produced at key times, eg following the return of the Iron Duke to the town, with a picture spread and report on the celebratory event; reports on the final performances of Projects 1, 2 and 3.

Costings: The transport of students to and from Bristol for the visit to see the restoration work in progress and to visit the *Western Daily Press* offices: £200; the journalist's input into the project, including interviewing, writing, layout and editing workshops: six days: £2,100. Further journalistic support for the second issue: one day: £350. Printing costs of two issues of the newspaper (full colour): £900. Total: £3,570.

